

Product datasheet for **TA326027**

GSK3 alpha (GSK3A) Rabbit Polyclonal Antibody

Product data:

| | |
|-------------------------|---|
| Product Type: | Primary Antibodies |
| Applications: | WB |
| Recommended Dilution: | WB: 1:500-1:2000; IHC: 1:50-1:200 |
| Reactivity: | Human, Mouse, Rat |
| Modifications: | Phospho-specific |
| Host: | Rabbit |
| Isotype: | IgG |
| Clonality: | Polyclonal |
| Immunogen: | The antiserum was produced against A synthesized peptide derived from human GSK3 alpha/ beta around the phosphorylation site of Tyrosine 279/216 |
| Formulation: | Rabbit IgG in phosphate buffered saline , pH 7.4, 150mM NaCl, 0.02% sodium azide and 50% glycerol. |
| Concentration: | lot specific |
| Purification: | The antibody was affinity-purified from rabbit antiserum by affinity-chromatography using epitope-specific peptide. |
| Conjugation: | Unconjugated |
| Storage: | Store at -20°C as received. |
| Stability: | Stable for 12 months from date of receipt. |
| Predicted Protein Size: | 51,46 kDa |
| Gene Name: | glycogen synthase kinase 3 alpha |
| Database Link: | NP_063937 Entrez Gene 50686 Rat Entrez Gene 606496 Mouse Entrez Gene 2931 Human P49840 |
| Background: | GSK3A a proline-directed protein kinase of the GSK family. Implicated in the control of several regulatory proteins including glycogen synthase, Myb, and c-Jun. GSK3 and GSK3 have similar functions. GSK3 phosphorylates tau, the principal component of neurofibrillary tangles in Alzheimer disease and is required for maximal production of amyloid plaque peptides by secretase. |

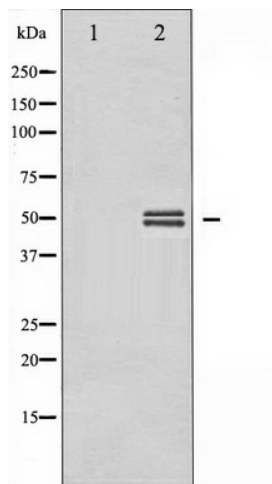


[View online »](#)

Synonyms: DKFZp686D0638

Protein Families: Druggable Genome, Protein Kinase

Protein Pathways: Chemokine signaling pathway

Product images:

Western blot analysis of GSK3 alpha/ beta phosphorylation expression in HeLa whole cell lysates, The lane on the left is treated with the antigen-specific peptide.