

Product datasheet for **TA326026**

GSK3 alpha (GSK3A) Rabbit Polyclonal Antibody

Product data:

Product Type:	Primary Antibodies
Applications:	WB
Recommended Dilution:	WB: 1:500-1:2000; IHC: 1:50-1:200; IP
Reactivity:	Human, Mouse, Rat
Modifications:	Phospho-specific
Host:	Rabbit
Isotype:	IgG
Clonality:	Polyclonal
Immunogen:	The antiserum was produced against A synthesized peptide derived from human GSK3 alpha around the phosphorylation site of Serine 21
Formulation:	Rabbit IgG in phosphate buffered saline , pH 7.4, 150mM NaCl, 0.02% sodium azide and 50% glycerol.
Concentration:	lot specific
Purification:	The antibody was affinity-purified from rabbit antiserum by affinity-chromatography using epitope-specific peptide.
Conjugation:	Unconjugated
Storage:	Store at -20°C as received.
Stability:	Stable for 12 months from date of receipt.
Predicted Protein Size:	51 kDa
Gene Name:	glycogen synthase kinase 3 alpha
Database Link:	NP_063937 Entrez Gene 50686 Rat Entrez Gene 606496 Mouse Entrez Gene 2931 Human P49840
Background:	GSK3A a proline-directed protein kinase of the GSK family. Implicated in the control of several regulatory proteins including glycogen synthase, Myb, and c-Jun. GSK3 and GSK3 have similar functions. GSK3 phosphorylates tau, the principal component of neurofibrillary tangles in Alzheimer disease and is required for maximal production of amyloid plaque peptides by secretase.



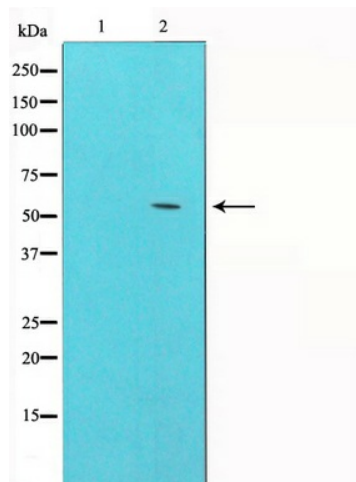
[View online »](#)

Synonyms: DKFZp686D0638

Protein Families: Druggable Genome, Protein Kinase

Protein Pathways: Chemokine signaling pathway

Product images:



Western blot analysis of GSK3 alpha phosphorylation expression in ovarycancer whole cell lysates, The lane on the left is treated with the antigen-specific peptide.