

## Product datasheet for **TA326024**

### GSK3 alpha (GSK3A) Rabbit Polyclonal Antibody

#### Product data:

Product Type:	Primary Antibodies
Applications:	WB
Recommended Dilution:	WB: 1:500-1:2000; IHC: 1:50-1:200; IP
Reactivity:	Human, Mouse, Rat
Host:	Rabbit
Isotype:	IgG
Clonality:	Polyclonal
Immunogen:	The antiserum was produced against A synthesized peptide derived from human GSK3 alpha
Formulation:	Rabbit IgG in phosphate buffered saline , pH 7.4, 150mM NaCl, 0.02% sodium azide and 50% glycerol.
Concentration:	lot specific
Purification:	The antibody was affinity-purified from rabbit antiserum by affinity-chromatography using epitope-specific peptide.
Conjugation:	Unconjugated
Storage:	Store at -20°C as received.
Stability:	Stable for 12 months from date of receipt.
Predicted Protein Size:	51 kDa
Gene Name:	glycogen synthase kinase 3 alpha
Database Link:	<a href="#">NP_063937</a> <a href="#">Entrez Gene 50686 Rat</a> <a href="#">Entrez Gene 606496 Mouse</a> <a href="#">Entrez Gene 2931 Human</a> <a href="#">P49840</a>
Background:	GSK3A a proline-directed protein kinase of the GSK family. Implicated in the control of several regulatory proteins including glycogen synthase, Myb, and c-Jun. GSK3 and GSK3 have similar functions. GSK3 phosphorylates tau, the principal component of neurofibrillary tangles in Alzheimer disease and is required for maximal production of amyloid plaque peptides by secretase.
Synonyms:	DKFZp686D0638

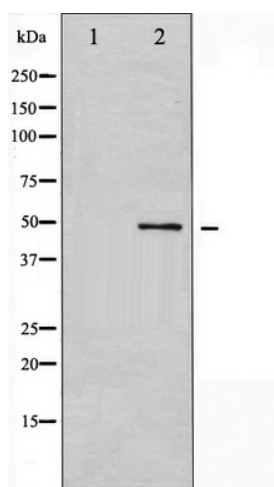


[View online »](#)

Protein Families: Druggable Genome, Protein Kinase

Protein Pathways: Chemokine signaling pathway

### Product images:



Western blot analysis of GSK3 alpha expression in ovarycancer whole cell lysates, The lane on the left is treated with the antigen-specific peptide.