

## Product datasheet for **TA326021**

### AMPK beta 1 (PRKAB1) Rabbit Polyclonal Antibody

#### Product data:

Product Type:	Primary Antibodies
Applications:	WB
Recommended Dilution:	WB: 1:500-1:2000; IHC: 1:50-1:200
Reactivity:	Human, Mouse, Rat
Modifications:	Phospho-specific
Host:	Rabbit
Isotype:	IgG
Clonality:	Polyclonal
Immunogen:	The antiserum was produced against A synthesized peptide derived from human AMPK $\beta$ 1 around the phosphorylation site of Serine 181
Formulation:	Rabbit IgG in phosphate buffered saline , pH 7.4, 150mM NaCl, 0.02% sodium azide and 50% glycerol.
Concentration:	lot specific
Purification:	The antibody was affinity-purified from rabbit antiserum by affinity-chromatography using epitope-specific peptide.
Conjugation:	Unconjugated
Storage:	Store at -20°C as received.
Stability:	Stable for 12 months from date of receipt.
Predicted Protein Size:	38 kDa
Gene Name:	protein kinase AMP-activated non-catalytic subunit beta 1
Database Link:	<a href="#">NP_006244</a> <a href="#">Entrez Gene 19079 Mouse</a> <a href="#">Entrez Gene 83803 Rat</a> <a href="#">Entrez Gene 5564 Human</a> <a href="#">Q9Y478</a>
Background:	AMPK $\beta$ 1 is a member of the SNF1 kinase family. It is a heterotrimeric protein comprising of an alpha (catalytic), beta (non-catalytic) and gamma (non-catalytic) subunits, 63, 38 and 38kDa respectively. AMPK $\beta$ 1 regulates fatty acid and sterol synthesis by phosphorylation of acetyl-coA.

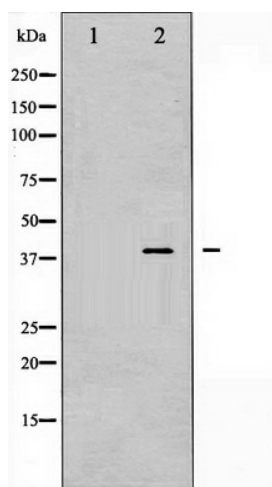


[View online »](#)

**Synonyms:** AMPK; HAMPKb

**Protein Families:** Druggable Genome

**Protein Pathways:** Adipocytokine signaling pathway, Hypertrophic cardiomyopathy (HCM), Insulin signaling pathway

**Product images:**

Western blot analysis of AMPK  $\beta$ 1 phosphorylation expression in Jurkat whole cell lysates, The lane on the left is treated with the antigen-specific peptide.