

Product datasheet for **TA326020**

AMPK alpha 1 (PRKAA1) Rabbit Polyclonal Antibody

Product data:

Product Type:	Primary Antibodies
Applications:	WB
Recommended Dilution:	WB: 1:500-1:2000; IHC: 1:50-1:200
Reactivity:	Human, Mouse, Rat
Modifications:	Phospho-specific
Host:	Rabbit
Isotype:	IgG
Clonality:	Polyclonal
Immunogen:	The antiserum was produced against A synthesized peptide derived from human AMPK1 around the phosphorylation site of Serine 485
Formulation:	Rabbit IgG in phosphate buffered saline , pH 7.4, 150mM NaCl, 0.02% sodium azide and 50% glycerol.
Concentration:	lot specific
Purification:	The antibody was affinity-purified from rabbit antiserum by affinity-chromatography using epitope-specific peptide.
Conjugation:	Unconjugated
Storage:	Store at -20°C as received.
Stability:	Stable for 12 months from date of receipt.
Predicted Protein Size:	62 kDa
Gene Name:	protein kinase AMP-activated catalytic subunit alpha 1
Database Link:	NP_006242 Entrez Gene 65248 Rat Entrez Gene 105787 Mouse Entrez Gene 5562 Human Q13131
Background:	AMPKA1 a protein kinase of the CAMKL family that plays a central role in regulating cellular and organismal energy balance in response to the balance between AMP/ATP, and intracellular Ca(2+) levels.
Synonyms:	AMPK; AMPKa1

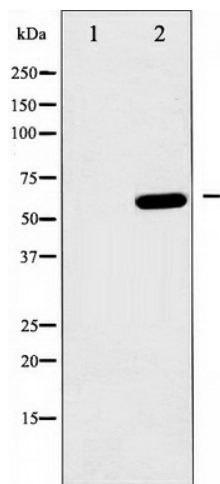


[View online »](#)

Protein Families: Druggable Genome, Protein Kinase

Protein Pathways: Adipocytokine signaling pathway, Hypertrophic cardiomyopathy (HCM), Insulin signaling pathway, mTOR signaling pathway, Regulation of autophagy

Product images:



Western blot analysis of AMPK1 phosphorylation expression in heatshock treated HeLa whole cell lysates, The lane on the left is treated with the antigen-specific peptide.