

Product datasheet for **TA326019**

Ezrin (EZR) Rabbit Polyclonal Antibody

Product data:

| | |
|-------------------------|--|
| Product Type: | Primary Antibodies |
| Applications: | WB |
| Recommended Dilution: | WB: 1:500-1:2000 |
| Reactivity: | Human, Mouse, Rat |
| Modifications: | Phospho-specific |
| Host: | Rabbit |
| Isotype: | IgG |
| Clonality: | Polyclonal |
| Immunogen: | The antiserum was produced against A synthesized peptide derived from human Ezrin around the phosphorylation site of Tyrosine 478 |
| Formulation: | Rabbit IgG in phosphate buffered saline , pH 7.4, 150mM NaCl, 0.02% sodium azide and 50% glycerol. |
| Concentration: | lot specific |
| Purification: | The antibody was affinity-purified from rabbit antiserum by affinity-chromatography using epitope-specific peptide. |
| Conjugation: | Unconjugated |
| Storage: | Store at -20°C as received. |
| Stability: | Stable for 12 months from date of receipt. |
| Predicted Protein Size: | 70 kDa |
| Gene Name: | ezrin |
| Database Link: | NP_003370 Entrez Gene 22350 MouseEntrez Gene 54319 RatEntrez Gene 7430 Human P15311 |
| Background: | The cytoplasmic peripheral membrane protein encoded by this gene functions as a protein-tyrosine kinase substrate in microvilli. As a member of the ERM protein family, this protein serves as an intermediate between the plasma membrane and the actin cytoskeleton. |
| Synonyms: | CVIL; CVL; HEL-S-105; VIL2 |

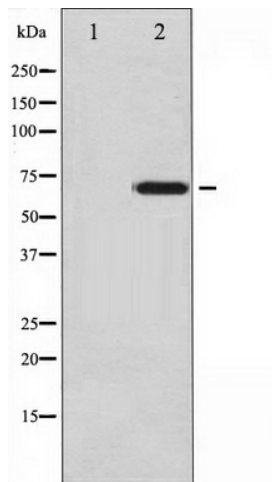


[View online »](#)

Protein Families: Druggable Genome

Protein Pathways: Leukocyte transendothelial migration, Pathogenic Escherichia coli infection, Regulation of actin cytoskeleton

Product images:



Western blot analysis of Ezrin phosphorylation expression in Na₃VO₄ treated K562 whole cell lysates, The lane on the left is treated with the antigen-specific peptide.