

## Product datasheet for **TA326018**

### Ezrin (EZR) Rabbit Polyclonal Antibody

#### Product data:

Product Type:	Primary Antibodies
Applications:	WB
Recommended Dilution:	WB: 1:500-1:2000
Reactivity:	Human, Mouse, Rat
Modifications:	Phospho-specific
Host:	Rabbit
Isotype:	IgG
Clonality:	Polyclonal
Immunogen:	The antiserum was produced against A synthesized peptide derived from human Ezrin around the phosphorylation site of Tyrosine 353
Formulation:	Rabbit IgG in phosphate buffered saline , pH 7.4, 150mM NaCl, 0.02% sodium azide and 50% glycerol.
Concentration:	lot specific
Purification:	The antibody was affinity-purified from rabbit antiserum by affinity-chromatography using epitope-specific peptide.
Conjugation:	Unconjugated
Storage:	Store at -20°C as received.
Stability:	Stable for 12 months from date of receipt.
Predicted Protein Size:	69 kDa
Gene Name:	ezrin
Database Link:	<a href="#">NP_003370</a> <a href="#">Entrez Gene 22350 MouseEntrez Gene 54319 RatEntrez Gene 7430 Human P15311</a>
Background:	The cytoplasmic peripheral membrane protein encoded by this gene functions as a protein-tyrosine kinase substrate in microvilli. As a member of the ERM protein family, this protein serves as an intermediate between the plasma membrane and the actin cytoskeleton.
Synonyms:	CVIL; CVL; HEL-S-105; VIL2

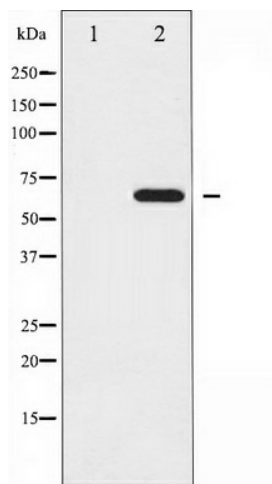


[View online »](#)

Protein Families: Druggable Genome

Protein Pathways: Leukocyte transendothelial migration, Pathogenic Escherichia coli infection, Regulation of actin cytoskeleton

### Product images:



Western blot analysis of Ezrin phosphorylation expression in EGF treated A431 whole cell lysates, The lane on the left is treated with the antigen-specific peptide.