

Product datasheet for **TA326012**

CD45 (PTPRC) Rabbit Polyclonal Antibody

Product data:

Product Type:	Primary Antibodies
Applications:	WB
Recommended Dilution:	WB: 1:500-1:2000; IF/ICC: 1:100-1:500
Reactivity:	Human, Mouse, Rat
Modifications:	Phospho-specific
Host:	Rabbit
Isotype:	IgG
Clonality:	Polyclonal
Immunogen:	The antiserum was produced against A synthesized peptide derived from human CD45 around the phosphorylation site of Serine 1007
Formulation:	Rabbit IgG in phosphate buffered saline , pH 7.4, 150mM NaCl, 0.02% sodium azide and 50% glycerol.
Concentration:	lot specific
Purification:	The antibody was affinity-purified from rabbit antiserum by affinity-chromatography using epitope-specific peptide.
Conjugation:	Unconjugated
Storage:	Store at -20°C as received.
Stability:	Stable for 12 months from date of receipt.
Predicted Protein Size:	150 kDa
Gene Name:	protein tyrosine phosphatase, receptor type C
Database Link:	NP_002829 Entrez Gene 19264 MouseEntrez Gene 24699 RatEntrez Gene 5788 Human P08575
Background:	The protein encoded by this gene is a member of the protein tyrosine phosphatase (PTP) family. PTPs are known to be signaling molecules that regulate a variety of cellular processes including cell growth, differentiation, mitotic cycle, and oncogenic transformation.
Synonyms:	B220; CD45; CD45R; GP180; L-CA; LCA; LY5; T200

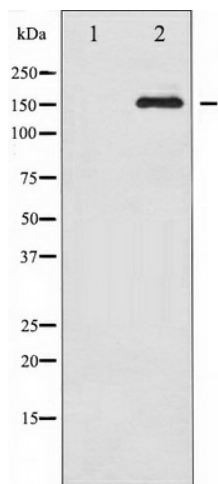


[View online »](#)

Protein Families: Druggable Genome, ES Cell Differentiation/IPS, Phosphatase, Transmembrane

Protein Pathways: Cell adhesion molecules (CAMs), Fc gamma R-mediated phagocytosis, Primary immunodeficiency, T cell receptor signaling pathway

Product images:



Western blot analysis of CD45 phosphorylation expression in TNF treated HeLa whole cell lysates, The lane on the left is treated with the antigen-specific peptide.