

Product datasheet for **TA326011**

DNA Polymerase beta (POLB) Rabbit Polyclonal Antibody

Product data:

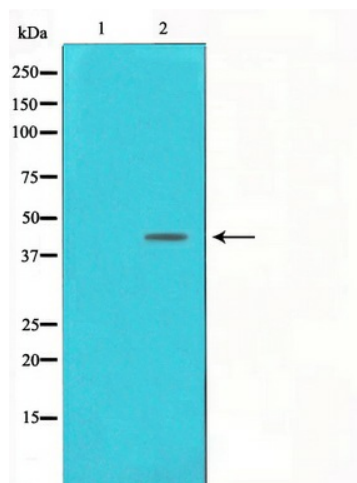
Product Type:	Primary Antibodies
Applications:	IHC, WB
Recommended Dilution:	WB: 1:500-1:2000; IHC: 1:50-1:200
Reactivity:	Human, Mouse, Rat
Host:	Rabbit
Isotype:	IgG
Clonality:	Polyclonal
Immunogen:	The antiserum was produced against a synthesized A synthesized peptide derived from human DNA Polymerase beta.
Formulation:	Rabbit IgG in phosphate buffered saline , pH 7.4, 150mM NaCl, 0.02% sodium azide and 50% glycerol.
Concentration:	lot specific
Purification:	The antibody was affinity-purified from rabbit antiserum by affinity-chromatography using epitope-specific peptide.
Conjugation:	Unconjugated
Storage:	Store at -20°C as received.
Stability:	Stable for 12 months from date of receipt.
Gene Name:	polymerase (DNA) beta
Database Link:	NP_002681 Entrez Gene 18970 MouseEntrez Gene 29240 RatEntrez Gene 5423 Human P06746
Background:	POLB Repair polymerase. Conducts gap-filling DNA synthesis in a stepwise distributive fashion rather than in a processive fashion as for other DNA polymerases. Has a 5'-deoxyribose-5- phosphate lyase (dRP lyase) activity. Belongs to the DNA polymerase type-X family. Monomer.
Synonyms:	MGC125976
Protein Families:	Druggable Genome



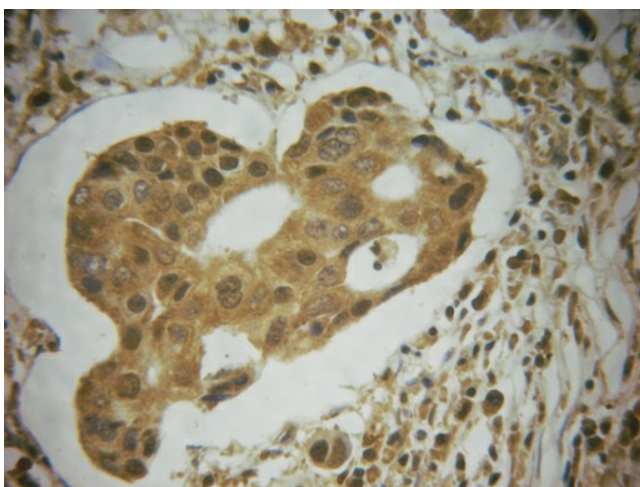
[View online »](#)

Protein Pathways: Base excision repair

Product images:



Western blot analysis on NIH-3T3 cell lysate using DNA Polymerase beta Antibody



Immunohistochemical analysis of paraffin-embedded breast carcinoma tissue using DNA Polymerase β Antibody.