

## Product datasheet for **TA326010**

### Glycogen synthase 1 (GYS1) Rabbit Polyclonal Antibody

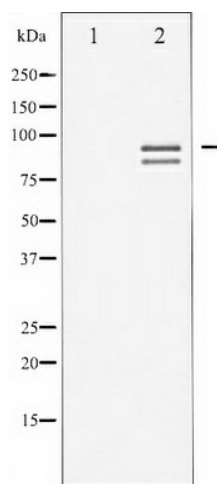
#### Product data:

Product Type:	Primary Antibodies
Applications:	WB
Recommended Dilution:	WB: 1:500-1:2000; IHC: 1:50-1:200
Reactivity:	Human, Mouse, Rat
Modifications:	Phospho-specific
Host:	Rabbit
Isotype:	IgG
Clonality:	Polyclonal
Immunogen:	The antiserum was produced against A synthesized peptide derived from human Glycogen Synthase around the phosphorylation site of Serine 645
Formulation:	Rabbit IgG in phosphate buffered saline , pH 7.4, 150mM NaCl, 0.02% sodium azide and 50% glycerol.
Concentration:	lot specific
Purification:	The antibody was affinity-purified from rabbit antiserum by affinity-chromatography using epitope-specific peptide.
Conjugation:	Unconjugated
Storage:	Store at -20°C as received.
Stability:	Stable for 12 months from date of receipt.
Predicted Protein Size:	83,89 kDa
Gene Name:	glycogen synthase 1
Database Link:	<a href="#">NP_002094</a> <a href="#">Entrez Gene 14936 MouseEntrez Gene 690987 RatEntrez Gene 2997 Human P13807</a>
Background:	GYS1 muscle glycogen synthase 1. Transfers glucosyl residue from UDP-glucose to glycogen. Regulated allosterically by glucose-6-phosphate, and by PKA-mediated phosphorylation.
Synonyms:	GSY; GYS
Protein Pathways:	Insulin signaling pathway, Starch and sucrose metabolism



[View online »](#)

## Product images:



Western blot analysis of Glycogen Synthase phosphorylation expression in PMA treated NIH-3T3 whole cell lysates, The lane on the left is treated with the antigen-specific peptide.