

Product datasheet for **TA326008**

GSK3 beta (GSK3B) Rabbit Polyclonal Antibody

Product data:

Product Type:	Primary Antibodies
Applications:	WB
Recommended Dilution:	WB: 1:500-1:2000; IHC: 1:50-1:200; IP
Reactivity:	Human, Mouse, Rat
Modifications:	Phospho-specific
Host:	Rabbit
Isotype:	IgG
Clonality:	Polyclonal
Immunogen:	The antiserum was produced against A synthesized peptide derived from human GSK3 beta around the phosphorylation site of Serine 9
Formulation:	Rabbit IgG in phosphate buffered saline , pH 7.4, 150mM NaCl, 0.02% sodium azide and 50% glycerol.
Concentration:	lot specific
Purification:	The antibody was affinity-purified from rabbit antiserum by affinity-chromatography using epitope-specific peptide.
Conjugation:	Unconjugated
Storage:	Store at -20°C as received.
Stability:	Stable for 12 months from date of receipt.
Predicted Protein Size:	46 kDa
Gene Name:	glycogen synthase kinase 3 beta
Database Link:	NP_002084 Entrez Gene 56637 MouseEntrez Gene 84027 RatEntrez Gene 2932 Human P49841
Background:	GSK3B a proline-directed protein kinase of the GSK family. Phosphorylates and inactivates glycogen synthase. Participates in the Wnt signaling pathway. Involved in energy metabolism, neuronal cell development, and body pattern formation .
Synonyms:	glycogen synthase kinase-3 beta; glycogen synthase kinase 3 beta; GSK3beta isoform

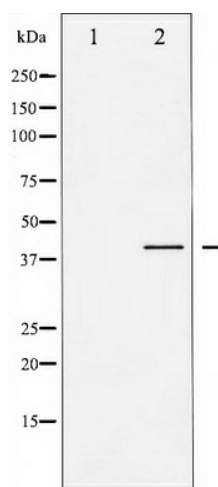


[View online »](#)

Protein Families: Druggable Genome, Protein Kinase

Protein Pathways: Alzheimer's disease, Axon guidance, Basal cell carcinoma, B cell receptor signaling pathway, Cell cycle, Chemokine signaling pathway, Colorectal cancer, Endometrial cancer, ErbB signaling pathway, Focal adhesion, Hedgehog signaling pathway, Insulin signaling pathway, Melanogenesis, Neurotrophin signaling pathway, Pathways in cancer, Prostate cancer, T cell receptor signaling pathway, Wnt signaling pathway

Product images:



Western blot analysis of GSK3 beta phosphorylation expression in EGF treated HeLa whole cell lysates, The lane on the left is treated with the antigen-specific peptide.