

## Product datasheet for **TA326005**

### PTGS1 Rabbit Polyclonal Antibody

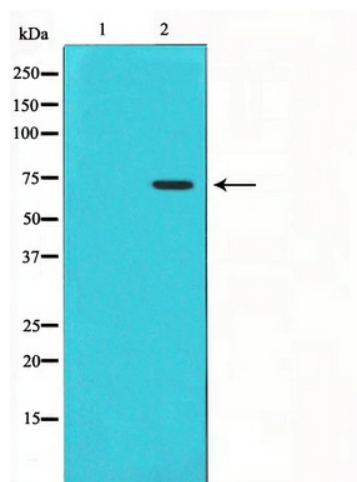
#### Product data:

Product Type:	Primary Antibodies
Applications:	IHC, WB
Recommended Dilution:	WB: 1:500-1:2000; IHC: 1:50-1:200
Reactivity:	Human
Host:	Rabbit
Isotype:	IgG
Clonality:	Polyclonal
Immunogen:	The antiserum was produced against a synthesized A synthesized peptide derived from human Cox1.
Formulation:	Rabbit IgG in phosphate buffered saline , pH 7.4, 150mM NaCl, 0.02% sodium azide and 50% glycerol.
Concentration:	lot specific
Purification:	The antibody was affinity-purified from rabbit antiserum by affinity-chromatography using epitope-specific peptide.
Conjugation:	Unconjugated
Storage:	Store at -20°C as received.
Stability:	Stable for 12 months from date of receipt.
Gene Name:	prostaglandin-endoperoxide synthase 1
Database Link:	<a href="#">NP_000953</a> <a href="#">Entrez Gene 5742 Human P23219</a>
Background:	cyclooxygenase-1 May play an important role in regulating or promoting cell proliferation in some normal and neoplastically transformed cells. Belongs to the prostaglandin G/H synthase family. Homodimer. 2 isoforms of the human protein are produced by alternative splicing.
Synonyms:	COX1; COX3; HS; PCOX1; PES-1; PGG; PGHS-1; PGHS1; PHS1; PTGHS
Protein Families:	Druggable Genome, Transmembrane
Protein Pathways:	Arachidonic acid metabolism, Metabolic pathways

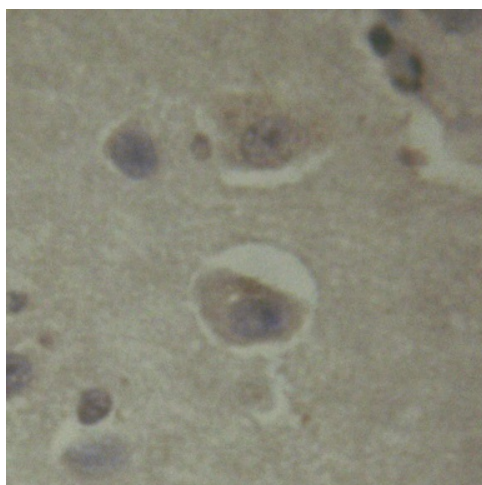


[View online »](#)

## Product images:



Western blot analysis on HuvEc cell lysate using Cox1 Antibody



Immunohistochemical analysis of paraffin-embedded human brain tissue using Cox1 Antibody.