

## Product datasheet for **TA326003**

### Metabotropic Glutamate Receptor 4 (GRM4) Rabbit Polyclonal Antibody

#### Product data:

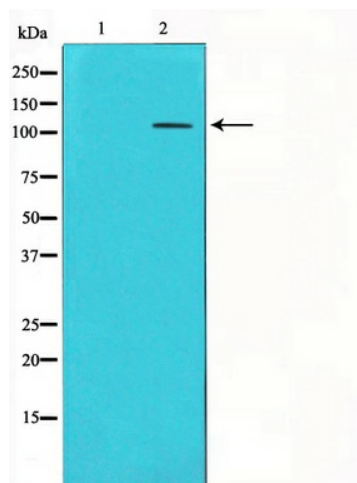
Product Type:	Primary Antibodies
Applications:	WB
Recommended Dilution:	WB: 1:500-1:2000
Reactivity:	Human, Mouse, Rat
Host:	Rabbit
Isotype:	IgG
Clonality:	Polyclonal
Immunogen:	The antiserum was produced against a synthesized A synthesized peptide derived from human mGluR4.
Formulation:	Rabbit IgG in phosphate buffered saline , pH 7.4, 150mM NaCl, 0.02% sodium azide and 50% glycerol.
Concentration:	lot specific
Purification:	The antibody was affinity-purified from rabbit antiserum by affinity-chromatography using epitope-specific peptide.
Conjugation:	Unconjugated
Storage:	Store at -20°C as received.
Stability:	Stable for 12 months from date of receipt.
Gene Name:	glutamate metabotropic receptor 4
Database Link:	<a href="#">NP_000832</a> <a href="#">Entrez Gene 24417 Rat</a> <a href="#">Entrez Gene 268934 Mouse</a> <a href="#">Entrez Gene 2914 Human</a> <a href="#">Q14833</a>
Background:	mGluR4 metabotropic glutamate receptor 3, a G-protein coupled receptor for glutamate. L-glutamate is the major excitatory neurotransmitter in the central nervous system and activates both ionotropic and metabotropic glutamate receptors. The activity of this receptor is mediated by a G-protein that inhibits adenylate cyclase activity.
Synonyms:	GPRC1D; mGlu4; MGLUR4
Protein Families:	Druggable Genome, GPCR, Transmembrane



[View online »](#)

Protein Pathways: Neuroactive ligand-receptor interaction, Taste transduction

**Product images:**



Western blot analysis on 293 cell lysate using mGluR4 Antibody