

Product datasheet for **TA325996**

NMDAR2B (GRIN2B) Rabbit Polyclonal Antibody

Product data:

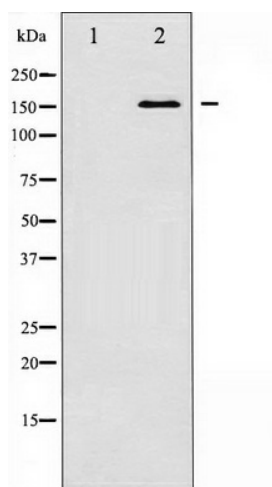
Product Type:	Primary Antibodies
Applications:	WB
Recommended Dilution:	WB: 1:500-1:2000
Reactivity:	Human, Mouse, Rat
Host:	Rabbit
Isotype:	IgG
Clonality:	Polyclonal
Immunogen:	The antiserum was produced against A synthesized peptide derived from human NMDAR2B
Formulation:	Rabbit IgG in phosphate buffered saline , pH 7.4, 150mM NaCl, 0.02% sodium azide and 50% glycerol.
Concentration:	lot specific
Purification:	The antibody was affinity-purified from rabbit antiserum by affinity-chromatography using epitope-specific peptide.
Conjugation:	Unconjugated
Storage:	Store at -20°C as received.
Stability:	Stable for 12 months from date of receipt.
Predicted Protein Size:	165 kDa
Gene Name:	glutamate ionotropic receptor NMDA type subunit 2B
Database Link:	NP_000825 Entrez Gene 14812 Mouse Entrez Gene 24410 Rat Entrez Gene 2904 Human Q13224
Background:	N-methyl-D-aspartate (NMDA) receptors are a class of ionotropic glutamate receptors. NMDA receptor channel has been shown to be involved in long-term potentiation, an activity-dependent increase in the efficiency of synaptic transmission thought to underlie certain kinds of memory and learning.
Synonyms:	EIEE27; GluN2B; hNR3; MRD6; NMDAR2B; NR2B
Protein Families:	Druggable Genome, Ion Channels: Glutamate Receptors, Transmembrane



[View online »](#)

Protein Pathways:

Alzheimer's disease, Amyotrophic lateral sclerosis (ALS), Huntington's disease, Long-term potentiation, Neuroactive ligand-receptor interaction, Systemic lupus erythematosus

Product images:

Western blot analysis of NMDAR2B expression in Jurkat whole cell lysates, The lane on the left is treated with the antigen-specific peptide.