

## Product datasheet for **TA325994**

### GRIA1 Rabbit Polyclonal Antibody

#### Product data:

Product Type:	Primary Antibodies
Applications:	WB
Recommended Dilution:	WB: 1:500-1:2000; IHC: 1:50-1:200
Reactivity:	Human, Mouse, Rat
Modifications:	Phospho-specific
Host:	Rabbit
Isotype:	IgG
Clonality:	Polyclonal
Immunogen:	The antiserum was produced against A synthesized peptide derived from human GluR1 around the phosphorylation site of Serine 863
Formulation:	Rabbit IgG in phosphate buffered saline , pH 7.4, 150mM NaCl, 0.02% sodium azide and 50% glycerol.
Concentration:	lot specific
Purification:	The antibody was affinity-purified from rabbit antiserum by affinity-chromatography using epitope-specific peptide.
Conjugation:	Unconjugated
Storage:	Store at -20°C as received.
Stability:	Stable for 12 months from date of receipt.
Predicted Protein Size:	102 kDa
Gene Name:	glutamate ionotropic receptor AMPA type subunit 1
Database Link:	<a href="#">NP_000818</a> <a href="#">Entrez Gene 14799 MouseEntrez Gene 50592 RatEntrez Gene 2890 Human P42261</a>
Background:	GluR1 an integral membrane protein belonging to the glutamate-gated ion channel family. L-glutamate (Glu) acts as an excitatory neurotransmitter at many synapses in the central nervous system.
Synonyms:	GluA1; GLUH1; GLUR1; GLURA; HBGR1

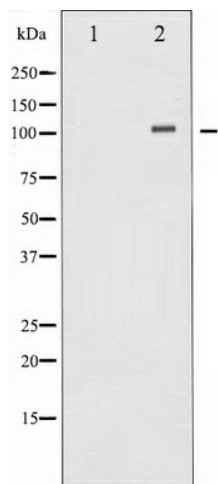


[View online »](#)

**Protein Families:** Druggable Genome, Ion Channels: Glutamate Receptors, Transmembrane

**Protein Pathways:** Amyotrophic lateral sclerosis (ALS), Long-term depression, Long-term potentiation, Neuroactive ligand-receptor interaction

**Product images:**



Western blot analysis of GluR1 phosphorylation expression in PMA treated HeLa whole cell lysates, The lane on the left is treated with the antigen-specific peptide.