

## Product datasheet for **TA325992**

### GJA1 Rabbit Polyclonal Antibody

#### Product data:

Product Type:	Primary Antibodies
Applications:	WB
Recommended Dilution:	WB: 1:500-1:2000; IHC: 1:50-1:200
Reactivity:	Human, Mouse, Rat
Modifications:	Phospho-specific
Host:	Rabbit
Isotype:	IgG
Clonality:	Polyclonal
Immunogen:	The antiserum was produced against A synthesized peptide derived from human Connexin 43 around the phosphorylation site of Serine 367
Formulation:	Rabbit IgG in phosphate buffered saline , pH 7.4, 150mM NaCl, 0.02% sodium azide and 50% glycerol.
Concentration:	lot specific
Purification:	The antibody was affinity-purified from rabbit antiserum by affinity-chromatography using epitope-specific peptide.
Conjugation:	Unconjugated
Storage:	Store at -20°C as received.
Stability:	Stable for 12 months from date of receipt.
Predicted Protein Size:	43 kDa
Gene Name:	gap junction protein alpha 1
Database Link:	<a href="#">NP_000156</a> <a href="#">Entrez Gene 14609 MouseEntrez Gene 24392 RatEntrez Gene 2697 Human P17302</a>
Background:	Gap junction protein, alpha 1 is a member of the connexin gene family and a component of gap junctions. Gap junctions are composed of arrays of intercellular channels and provide a route for the diffusion of materials of low molecular weight from cell to cell.
Synonyms:	AVSD3; CMDR; CX43; EKVP; GJAL; HLHS1; HSS; ODDD; PPKCA

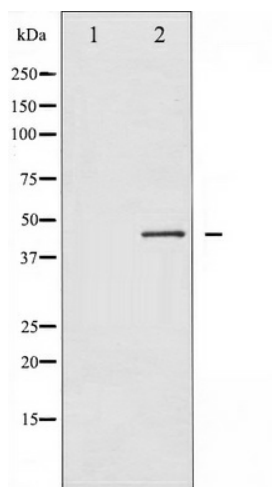


[View online »](#)

**Protein Families:** Druggable Genome, Ion Channels: Other, Transmembrane

**Protein Pathways:** Arrhythmogenic right ventricular cardiomyopathy (ARVC), Gap junction

**Product images:**



Western blot analysis of Connexin 43 phosphorylation expression in PMA treated K562 whole cell lysates, The lane on the left is treated with the antigen-specific peptide.