

## Product datasheet for **TA325989**

### EPOR Rabbit Polyclonal Antibody

#### Product data:

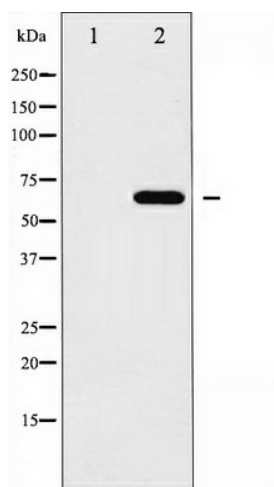
Product Type:	Primary Antibodies
Applications:	WB
Recommended Dilution:	WB: 1:500-1:2000; IF/ICC: 1:100-1:500
Reactivity:	Human, Mouse, Rat
Host:	Rabbit
Isotype:	IgG
Clonality:	Polyclonal
Immunogen:	The antiserum was produced against A synthesized peptide derived from human Epo-R
Formulation:	Rabbit IgG in phosphate buffered saline , pH 7.4, 150mM NaCl, 0.02% sodium azide and 50% glycerol.
Concentration:	lot specific
Purification:	The antibody was affinity-purified from rabbit antiserum by affinity-chromatography using epitope-specific peptide.
Conjugation:	Unconjugated
Storage:	Store at -20°C as received.
Stability:	Stable for 12 months from date of receipt.
Predicted Protein Size:	65 kDa
Gene Name:	erythropoietin receptor
Database Link:	<a href="#">NP_000112</a> <a href="#">Entrez Gene 13857 Mouse</a> <a href="#">Entrez Gene 24336 Rat</a> <a href="#">Entrez Gene 2057 Human</a> <a href="#">P19235</a>
Background:	Erythropoiesis is regulated through the interaction of erythropoietin (Epo) with its receptor, EpoR, a member of the cytokine superfamily of receptors. The human EpoR is a 507 amino acid transmembrane protein that forms homodimers following erythropoietin activation and is related to the interleukin 2 (IL-2) receptor $\beta$ chain subunit (IL-2R $\beta$ ).
Synonyms:	EPO-R
Protein Families:	Druggable Genome, Secreted Protein, Transmembrane



[View online »](#)

**Protein Pathways:** Cytokine-cytokine receptor interaction, Hematopoietic cell lineage, Jak-STAT signaling pathway

**Product images:**



Western blot analysis of Epo-R expression in EPO treated COS7 whole cell lysates, The lane on the left is treated with the antigen-specific peptide.