

## Product datasheet for **TA325984**

### 14-3-3 zeta (YWHAZ) Rabbit Polyclonal Antibody

#### Product data:

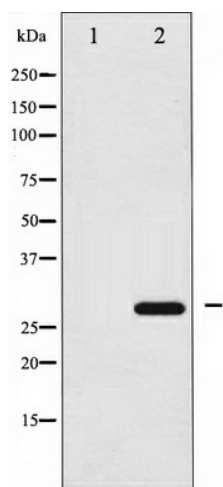
Product Type:	Primary Antibodies
Applications:	WB
Recommended Dilution:	WB: 1:500-1:2000; IHC: 1:50-1:200; IF/ICC: 1:100-1:500
Reactivity:	Human, Mouse, Rat
Modifications:	Phospho-specific
Host:	Rabbit
Isotype:	IgG
Clonality:	Polyclonal
Immunogen:	The antiserum was produced against A synthesized peptide derived from human 14-3-3 zeta around the phosphorylation site of Serine 58
Formulation:	Rabbit IgG in phosphate buffered saline , pH 7.4, 150mM NaCl, 0.02% sodium azide and 50% glycerol.
Concentration:	lot specific
Purification:	The antibody was affinity-purified from rabbit antiserum by affinity-chromatography using epitope-specific peptide.
Conjugation:	Unconjugated
Storage:	Store at -20°C as received.
Stability:	Stable for 12 months from date of receipt.
Predicted Protein Size:	28 kDa
Gene Name:	tyrosine 3-monooxygenase/tryptophan 5-monooxygenase activation protein zeta
Database Link:	<a href="#">NP_001129171</a> <a href="#">Entrez Gene 22631 Mouse</a> <a href="#">Entrez Gene 25578 Rat</a> <a href="#">Entrez Gene 7534 Human</a> <a href="#">P63104</a>
Background:	14-3-3 zeta is a protein of the 14-3-3 family of proteins which mediate signal transduction by binding to phosphoserine-containing proteins.
Synonyms:	14-3-3-zeta; HEL-S-3; HEL4; KCIP-1; YWHAD



[View online »](#)

**Protein Pathways:** Cell cycle, Neurotrophin signaling pathway, Oocyte meiosis, Pathogenic Escherichia coli infection

**Product images:**



Western blot analysis of 14-3-3 zeta phosphorylation expression in UV treated NIH-3T3 whole cell lysates, The lane on the left is treated with the antigen-specific peptide.