

## Product datasheet for **TA325981**

### YAP1 Rabbit Polyclonal Antibody

#### Product data:

Product Type:	Primary Antibodies
Applications:	WB
Recommended Dilution:	WB: 1:500-1:2000; IHC: 1:50-1:200
Reactivity:	Human, Mouse, Rat
Modifications:	Phospho-specific
Host:	Rabbit
Isotype:	IgG
Clonality:	Polyclonal
Immunogen:	The antiserum was produced against A synthesized peptide derived from human YAP around the phosphorylation site of Serine 127
Formulation:	Rabbit IgG in phosphate buffered saline , pH 7.4, 150mM NaCl, 0.02% sodium azide and 50% glycerol.
Concentration:	lot specific
Purification:	The antibody was affinity-purified from rabbit antiserum by affinity-chromatography using epitope-specific peptide.
Conjugation:	Unconjugated
Storage:	Store at -20°C as received.
Stability:	Stable for 12 months from date of receipt.
Predicted Protein Size:	65 kDa
Gene Name:	Yes associated protein 1
Database Link:	<a href="#">NP_001123617</a> <a href="#">Entrez Gene 22601 Mouse</a> <a href="#">Entrez Gene 363014 Rat</a> <a href="#">Entrez Gene 10413 Human</a> <a href="#">P46937</a>
Background:	This gene encodes the human ortholog of chicken YAP protein which binds to the SH3 domain of the Yes proto-oncogene product. This protein contains a WW domain that is found in various structural, regulatory and signaling molecules in yeast, nematode, and mammals, and may be involved in protein-protein interaction.

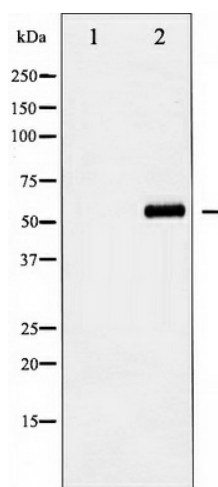


[View online »](#)

Synonyms: COB1; YAP; YAP2; YAP65; YKI

Protein Families: Druggable Genome

### Product images:



Western blot analysis of YAP phosphorylation expression in COS7 whole cell lysates, The lane on the left is treated with the antigen-specific peptide.