

Product datasheet for **TA325977**

WNK1 Rabbit Polyclonal Antibody

Product data:

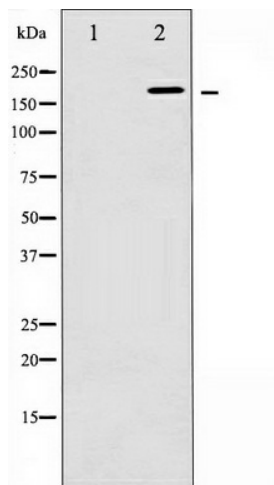
Product Type:	Primary Antibodies
Applications:	WB
Recommended Dilution:	WB: 1:500-1:2000; IHC: 1:50-1:200
Reactivity:	Human, Mouse, Rat
Modifications:	Phospho-specific
Host:	Rabbit
Isotype:	IgG
Clonality:	Polyclonal
Immunogen:	The antiserum was produced against A synthesized peptide derived from human WNK1 around the phosphorylation site of Threonine 58
Formulation:	Rabbit IgG in phosphate buffered saline , pH 7.4, 150mM NaCl, 0.02% sodium azide and 50% glycerol.
Concentration:	lot specific
Purification:	The antibody was affinity-purified from rabbit antiserum by affinity-chromatography using epitope-specific peptide.
Conjugation:	Unconjugated
Storage:	Store at -20°C as received.
Stability:	Stable for 12 months from date of receipt.
Predicted Protein Size:	230 kDa
Gene Name:	WNK lysine deficient protein kinase 1
Database Link:	NP_001171914 Entrez Gene 116477 RatEntrez Gene 232341 MouseEntrez Gene 65125 Human Q9H4A3
Background:	WNK1 a serine-threonine protein kinase that controls sodium and chloride ion transport. May regulate the activity of the thiazide-sensitive Na-Cl cotransporter SLC12A3 by phosphorylation. May also play a role in actin cytoskeletal reorganization.
Synonyms:	HSAN2; HSN2; KDP; p65; PPP1R167; PRKWNK1; PSK



[View online »](#)

Protein Families: Druggable Genome, Protein Kinase

Product images:



Western blot analysis of WNK1 phosphorylation expression in EGF treated 293 whole cell lysates, The lane on the left is treated with the antigen-specific peptide.