

Product datasheet for **TA325971**

VEGFB Rabbit Polyclonal Antibody

Product data:

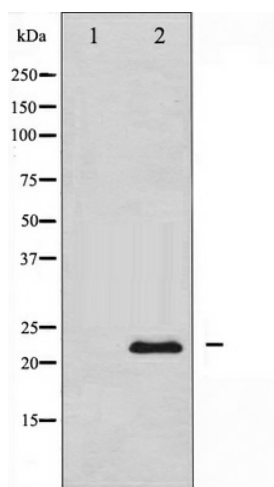
Product Type:	Primary Antibodies
Applications:	WB
Recommended Dilution:	WB: 1:500-1:2000
Reactivity:	Human, Mouse, Rat
Host:	Rabbit
Isotype:	IgG
Clonality:	Polyclonal
Immunogen:	A synthesized peptide derived from human VEGFB
Formulation:	Rabbit IgG in phosphate buffered saline , pH 7.4, 150mM NaCl, 0.02% sodium azide and 50% glycerol.
Concentration:	lot specific
Purification:	The antibody was affinity-purified from rabbit antiserum by affinity-chromatography using epitope-specific peptide.
Conjugation:	Unconjugated
Storage:	Store at -20°C as received.
Stability:	Stable for 12 months from date of receipt.
Predicted Protein Size:	21 kDa
Gene Name:	vascular endothelial growth factor B
Database Link:	NP_003368 Entrez Gene 22340 Mouse Entrez Gene 89811 Rat Entrez Gene 7423 Human P49765
Background:	Several variants of VEGF have been described that arise by alternative mRNA splicing. It has been speculated that VEGF may function as a tumor angiogenesis factor in vivo. Two additional proteins designated VEGF-B and VEGF-C share a significant degree of homology with VEGF.
Synonyms:	VEGFL; VRF
Protein Families:	Druggable Genome, Secreted Protein



[View online »](#)

Protein Pathways: Bladder cancer, Cytokine-cytokine receptor interaction, Focal adhesion, mTOR signaling pathway, Pancreatic cancer, Pathways in cancer, Renal cell carcinoma

Product images:



Western blot analysis of VEGFB expression in Jurkat whole cell lysates, The lane on the left is treated with the antigen-specific peptide.