

## Product datasheet for **TA325965**

### VASP Rabbit Polyclonal Antibody

#### Product data:

Product Type:	Primary Antibodies
Applications:	WB
Recommended Dilution:	WB: 1:500-1:2000; IHC: 1:50-1:200
Reactivity:	Human, Mouse, Rat
Modifications:	Phospho-specific
Host:	Rabbit
Isotype:	IgG
Clonality:	Polyclonal
Immunogen:	The antiserum was produced against A synthesized peptide derived from human VASP around the phosphorylation site of Serine 157
Formulation:	Rabbit IgG in phosphate buffered saline , pH 7.4, 150mM NaCl, 0.02% sodium azide and 50% glycerol.
Concentration:	lot specific
Purification:	The antibody was affinity-purified from rabbit antiserum by affinity-chromatography using epitope-specific peptide.
Conjugation:	Unconjugated
Storage:	Store at -20°C as received.
Stability:	Stable for 12 months from date of receipt.
Predicted Protein Size:	46 kDa
Gene Name:	vasodilator-stimulated phosphoprotein
Database Link:	<a href="#">NP_003361</a> <a href="#">Entrez Gene 22323 MouseEntrez Gene 361517 RatEntrez Gene 7408 Human P50552</a>
Background:	Vasodilator-stimulated phosphoprotein (VASP) is a member of the Ena-VASP protein family. Ena-VASP family members contain an EHV1 N-terminal domain that binds proteins containing E/DFPPPPXD/E motifs and targets Ena-VASP proteins to focal adhesions.
Synonyms:	vasodilator-stimulated phosphoprotein

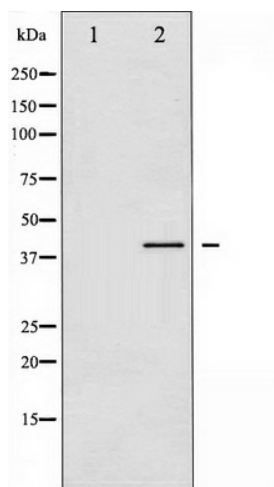


[View online »](#)

**Protein Families:** Druggable Genome, Stem cell - Pluripotency

**Protein Pathways:** Fc gamma R-mediated phagocytosis, Focal adhesion, Leukocyte transendothelial migration

**Product images:**



Western blot analysis of VASP phosphorylation expression in PMA treated HeLa whole cell lysates, The lane on the left is treated with the antigen-specific peptide.