

Product datasheet for **TA325962**

gamma Tubulin (TUBG1) Rabbit Polyclonal Antibody

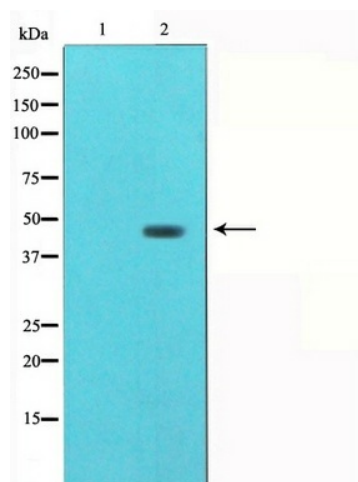
Product data:

| | |
|-----------------------|--|
| Product Type: | Primary Antibodies |
| Applications: | WB |
| Recommended Dilution: | WB: 1:500-1:2000 |
| Reactivity: | Human, Mouse, Rat |
| Host: | Rabbit |
| Isotype: | IgG |
| Clonality: | Polyclonal |
| Immunogen: | The antiserum was produced against a synthesized A synthesized peptide derived from human Tubulin gamma. |
| Formulation: | Rabbit IgG in phosphate buffered saline , pH 7.4, 150mM NaCl, 0.02% sodium azide and 50% glycerol. |
| Concentration: | lot specific |
| Purification: | The antibody was affinity-purified from rabbit antiserum by affinity-chromatography using epitope-specific peptide. |
| Conjugation: | Unconjugated |
| Storage: | Store at -20°C as received. |
| Stability: | Stable for 12 months from date of receipt. |
| Gene Name: | tubulin gamma 1 |
| Database Link: | NP_001061 Entrez Gene 103733 MouseEntrez Gene 252921 RatEntrez Gene 7283 Human P23258 |
| Background: | TUBG2 Tubulin is the major constituent of microtubules. Gamma tubulin is found at microtubule organizing centers (MTOC) such as the spindle poles or the centrosome. Pericentriolar matrix component that regulates alpha/beta tubulin minus-end nucleation, centrosome duplication and spindle formation (By similarity). |
| Synonyms: | CDCBM4; GCP-1; TUBG; TUBGCP1 |
| Protein Families: | Druggable Genome |



[View online »](#)

Product images:



Western blot analysis on mouse brain cell lysate using Tubulin gamma Antibody