

Product datasheet for **TA325961**

gamma Tubulin (TUBG1) Rabbit Polyclonal Antibody

Product data:

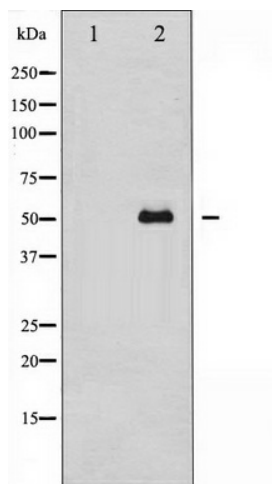
Product Type:	Primary Antibodies
Applications:	WB
Recommended Dilution:	WB: 1:500-1:2000; IHC: 1:50-1:200
Reactivity:	Human, Mouse, Rat
Host:	Rabbit
Isotype:	IgG
Clonality:	Polyclonal
Immunogen:	The antiserum was produced against A synthesized peptide derived from human Tubulin gamma
Formulation:	Rabbit IgG in phosphate buffered saline , pH 7.4, 150mM NaCl, 0.02% sodium azide and 50% glycerol.
Concentration:	lot specific
Purification:	The antibody was affinity-purified from rabbit antiserum by affinity-chromatography using epitope-specific peptide.
Conjugation:	Unconjugated
Storage:	Store at -20°C as received.
Stability:	Stable for 12 months from date of receipt.
Predicted Protein Size:	51 kDa
Gene Name:	tubulin gamma 1
Database Link:	NP_001061 Entrez Gene 103733 Mouse Entrez Gene 252921 Rat Entrez Gene 7283 Human P23258
Background:	TUBG1 Tubulin is the major constituent of microtubules. Gamma tubulin is found at microtubule organizing centers (MTOC) such as the spindle poles or the centrosome. Pericentriolar matrix component that regulates alpha/beta tubulin minus-end nucleation, centrosome duplication and spindle formation. Interacts with GCP2 and GCP3. Interacts with B9D2. Interacts with CDK5RAP2;
Synonyms:	CDCBM4; GCP-1; TUBG; TUBGCP1



[View online »](#)

Protein Families: Druggable Genome

Product images:



Western blot analysis of Tubulin gamma expression in Mouse brain tissue lysates, The lane on the left is treated with the antigen-specific peptide.