

Product datasheet for **TA325960**

Tuberin (TSC2) Rabbit Polyclonal Antibody

Product data:

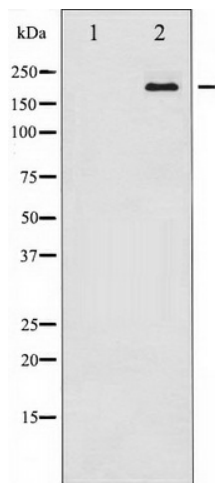
Product Type:	Primary Antibodies
Applications:	WB
Recommended Dilution:	WB: 1:500-1:2000; IHC: 1:50-1:200
Reactivity:	Human, Mouse, Rat
Host:	Rabbit
Isotype:	IgG
Clonality:	Polyclonal
Immunogen:	The antiserum was produced against A synthesized peptide derived from human Tuberin/TSC2
Formulation:	Rabbit IgG in phosphate buffered saline , pH 7.4, 150mM NaCl, 0.02% sodium azide and 50% glycerol.
Concentration:	lot specific
Purification:	The antibody was affinity-purified from rabbit antiserum by affinity-chromatography using epitope-specific peptide.
Conjugation:	Unconjugated
Storage:	Store at -20°C as received.
Stability:	Stable for 12 months from date of receipt.
Predicted Protein Size:	200 kDa
Gene Name:	tuberous sclerosis 2
Database Link:	NP_000539 Entrez Gene 22084 Mouse Entrez Gene 24855 Rat Entrez Gene 7249 Human P49815
Background:	Mutations in this gene lead to tuberous sclerosis complex. Its gene product is believed to be a tumor suppressor and is able to stimulate specific GTPases. The protein associates with hamartin in a cytosolic complex, possibly acting as a chaperone for hamartin.
Synonyms:	LAM; PPP1R160; TSC4
Protein Families:	Druggable Genome



[View online »](#)

Protein Pathways: Insulin signaling pathway, mTOR signaling pathway, p53 signaling pathway

Product images:



Western blot analysis of Tuberin/TSC2 expression in 293 whole cell lysates, The lane on the left is treated with the antigen-specific peptide.