

## Product datasheet for **TA325950**

### **p53 (TP53) Rabbit Polyclonal Antibody**

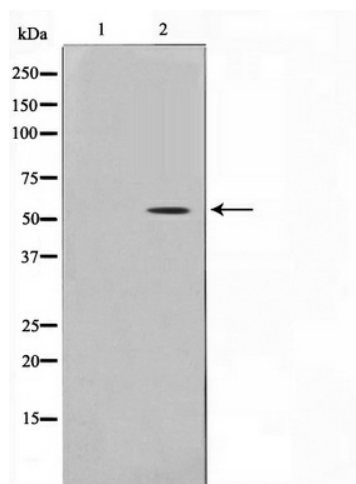
#### **Product data:**

|                                |   |
|--------------------------------|---|
| <b>Product Type:</b>           | Primary Antibodies  |
| <b>Applications:</b>           | WB  |
| <b>Recommended Dilution:</b>   | WB: 1:500-1:2000; IHC: 1:50-1:200; IP   |
| <b>Reactivity:</b>             | Human, Rat  |
| <b>Modifications:</b>          | Phospho-specific  |
| <b>Host:</b>                   | Rabbit  |
| <b>Isotype:</b>                | IgG   |
| <b>Clonality:</b>              | Polyclonal  |
| <b>Immunogen:</b>              | The antiserum was produced against A synthesized peptide derived from human p53 around the phosphorylation site of Serine 15  |
| <b>Formulation:</b>            | Rabbit IgG in phosphate buffered saline , pH 7.4, 150mM NaCl, 0.02% sodium azide and 50% glycerol.  |
| <b>Concentration:</b>          | lot specific  |
| <b>Purification:</b>           | The antibody was affinity-purified from rabbit antiserum by affinity-chromatography using epitope-specific peptide.   |
| <b>Conjugation:</b>            | Unconjugated  |
| <b>Storage:</b>                | Store at -20°C as received.   |
| <b>Stability:</b>              | Stable for 12 months from date of receipt.  |
| <b>Predicted Protein Size:</b> | 53 kDa  |
| <b>Gene Name:</b>              | tumor protein p53   |
| <b>Database Link:</b>          | <a href="#">NP_000537</a><br><a href="#">Entrez Gene 24842 Rat</a> <a href="#">Entrez Gene 7157 Human</a><br><a href="#">P04637</a>   |
| <b>Background:</b>             | Tumor protein p53, a nuclear protein, plays an essential role in the regulation of cell cycle, specifically in the transition from G0 to G1. It is found in very low levels in normal cells, however, in a variety of transformed cell lines, it is expressed in high amounts, and believed to contribute to transformation and malignancy. |



[View online »](#)

|                          |   |
|--------------------------|---|
| <b>Synonyms:</b>         | BCC7; LFS1; P53; TRP53  |
| <b>Protein Families:</b> | Druggable Genome, Stem cell - Pluripotency, Transcription Factors   |
| <b>Protein Pathways:</b> | Amyotrophic lateral sclerosis (ALS), Apoptosis, Basal cell carcinoma, Bladder cancer, Cell cycle, Chronic myeloid leukemia, Colorectal cancer, Endometrial cancer, Glioma, Huntington's disease, MAPK signaling pathway, Melanoma, Neurotrophin signaling pathway, Non-small cell lung cancer, p53 signaling pathway, Pancreatic cancer, Pathways in cancer, Prostate cancer, Small cell lung cancer, Thyroid cancer, Wnt signaling pathway |

**Product images:**

Western blot analysis of p53 phosphorylation expression in HU treated HeLa whole cell lysates, The lane on the left is treated with the antigen-specific peptide.