

## Product datasheet for **TA325946**

### Cardiac Troponin I (TNNI3) Rabbit Polyclonal Antibody

#### Product data:

Product Type:	Primary Antibodies
Applications:	WB
Recommended Dilution:	WB: 1:500-1:2000; IHC: 1:50-1:200
Reactivity:	Human, Mouse, Rat
Modifications:	Phospho-specific
Host:	Rabbit
Isotype:	IgG
Clonality:	Polyclonal
Immunogen:	The antiserum was produced against A synthesized peptide derived from human TNNI3 around the phosphorylation site of Serine 43
Formulation:	Rabbit IgG in phosphate buffered saline , pH 7.4, 150mM NaCl, 0.02% sodium azide and 50% glycerol.
Concentration:	lot specific
Purification:	The antibody was affinity-purified from rabbit antiserum by affinity-chromatography using epitope-specific peptide.
Conjugation:	Unconjugated
Storage:	Store at -20°C as received.
Stability:	Stable for 12 months from date of receipt.
Predicted Protein Size:	26 kDa
Gene Name:	troponin I3, cardiac type
Database Link:	<a href="#">NP_000354</a> <a href="#">Entrez Gene 21954 Mouse</a> <a href="#">Entrez Gene 29248 Rat</a> <a href="#">Entrez Gene 7137 Human</a> <a href="#">P19429</a>
Background:	Troponin I (TnI) is one of 3 subunits that form the troponin complex of the thin filaments of striated muscle; see also TNNI1 (MIM 191042). The others are troponin T (TnT; see MIM 191041) and troponin C (TnC; see MIM 191040).
Synonyms:	CMD1FF; CMD2A; CMH7; cTnI; RCM1; TNNC1

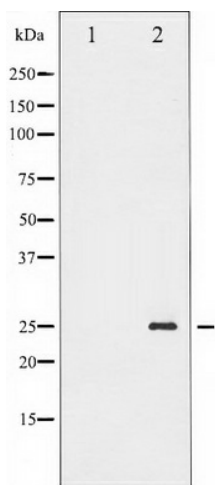


[View online »](#)

**Protein Families:** Druggable Genome, ES Cell Differentiation/IPS, Stem cell - Pluripotency

**Protein Pathways:** Cardiac muscle contraction, Dilated cardiomyopathy, Hypertrophic cardiomyopathy (HCM)

**Product images:**



Western blot analysis of TNNI3 phosphorylation expression in Jurkat whole cell lysates, The lane on the left is treated with the antigen-specific peptide.