

Product datasheet for **TA325941**

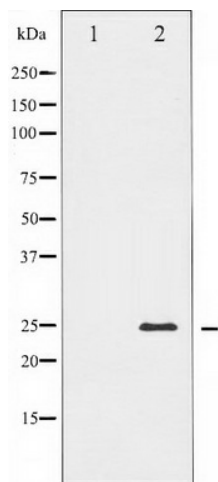
TIMP4 Rabbit Polyclonal Antibody

Product data:

Product Type:	Primary Antibodies
Applications:	WB
Recommended Dilution:	WB: 1:500-1:2000; IHC: 1:50-1:200
Reactivity:	Human, Mouse, Rat
Host:	Rabbit
Isotype:	IgG
Clonality:	Polyclonal
Immunogen:	The antiserum was produced against A synthesized peptide derived from human TIMP4
Formulation:	Rabbit IgG in phosphate buffered saline , pH 7.4, 150mM NaCl, 0.02% sodium azide and 50% glycerol.
Concentration:	lot specific
Purification:	The antibody was affinity-purified from rabbit antiserum by affinity-chromatography using epitope-specific peptide.
Conjugation:	Unconjugated
Storage:	Store at -20°C as received.
Stability:	Stable for 12 months from date of receipt.
Predicted Protein Size:	26 kDa
Gene Name:	TIMP metalloproteinase inhibitor 4
Database Link:	NP_003247 Entrez Gene 110595 Mouse Entrez Gene 680130 Rat Entrez Gene 7079 Human Q99727
Background:	TIMP4 Complexes with metalloproteinases (such as collagenases) and irreversibly inactivates them by binding to their catalytic zinc cofactor. Known to act on MMP-1, MMP-2, MMP-3, MMP-7 and MMP- 9. Belongs to the protease inhibitor I35 (TIMP) family.
Synonyms:	TIMP metalloproteinase inhibitor 4; tissue inhibitor of metalloproteinase 4
Protein Families:	Druggable Genome, Secreted Protein



[View online »](#)

Product images:

Western blot analysis of TIMP4 expression in NIH-3T3 whole cell lysates, The lane on the left is treated with the antigen-specific peptide.