

## Product datasheet for **TA325938**

### TIMP1 Rabbit Polyclonal Antibody

#### Product data:

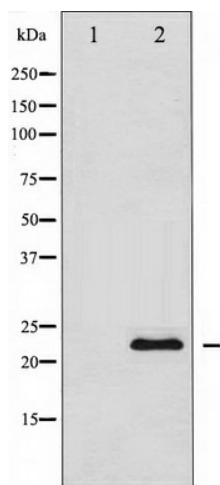
Product Type:	Primary Antibodies
Applications:	WB
Recommended Dilution:	WB: 1:500-1:2000
Reactivity:	Human, Mouse, Rat
Host:	Rabbit
Isotype:	IgG
Clonality:	Polyclonal
Immunogen:	The antiserum was produced against A synthesized peptide derived from human TIMP1
Formulation:	Rabbit IgG in phosphate buffered saline , pH 7.4, 150mM NaCl, 0.02% sodium azide and 50% glycerol.
Concentration:	lot specific
Purification:	The antibody was affinity-purified from rabbit antiserum by affinity-chromatography using epitope-specific peptide.
Conjugation:	Unconjugated
Storage:	Store at -20°C as received.
Stability:	Stable for 12 months from date of receipt.
Predicted Protein Size:	24 kDa
Gene Name:	TIMP metalloproteinase inhibitor 1
Database Link:	<a href="#">NP_003245</a> <a href="#">Entrez Gene 21857 Mouse</a> <a href="#">Entrez Gene 116510 Rat</a> <a href="#">Entrez Gene 7076 Human</a> <a href="#">P01033</a>
Background:	TIMP1 Complexes with metalloproteinases (such as collagenases) and irreversibly inactivates them by binding to their catalytic zinc cofactor. Also mediates erythropoiesis in vitro; but, unlike IL-3, it is species-specific, stimulating the growth and differentiation of only human and murine erythroid progenitors. Known to act on MMP-1, MMP-2, MMP-3, MMP-7, MMP-8, MMP-9, MMP-10, MMP-11, MMP-12, MMP-13 and MMP-16.
Synonyms:	CLGI; EPA; EPO; HCl; TIMP; TIMP-1



[View online »](#)

Protein Families: Druggable Genome, Secreted Protein

**Product images:**



Western blot analysis of TIMP1 expression in 293 whole cell lysates, The lane on the left is treated with the antigen-specific peptide.