

Product datasheet for **TA325935**

Tyrosine Hydroxylase (TH) Rabbit Polyclonal Antibody

Product data:

Product Type:	Primary Antibodies
Applications:	WB
Recommended Dilution:	WB: 1:500-1:2000; IHC: 1:50-1:200; IF/ICC: 1:100-1:500
Reactivity:	Human, Mouse, Rat
Modifications:	Phospho-specific
Host:	Rabbit
Isotype:	IgG
Clonality:	Polyclonal
Immunogen:	The antiserum was produced against A synthesized peptide derived from human Tyrosine Hydroxylase around the phosphorylation site of Serine 19
Formulation:	Rabbit IgG in phosphate buffered saline , pH 7.4, 150mM NaCl, 0.02% sodium azide and 50% glycerol.
Concentration:	lot specific
Purification:	The antibody was affinity-purified from rabbit antiserum by affinity-chromatography using epitope-specific peptide.
Conjugation:	Unconjugated
Storage:	Store at -20°C as received.
Stability:	Stable for 12 months from date of receipt.
Predicted Protein Size:	45 kDa
Gene Name:	tyrosine hydroxylase
Database Link:	NP_000351 Entrez Gene 21823 Mouse Entrez Gene 25085 Rat Entrez Gene 7054 Human P07101
Background:	Tyrosine hydroxylase (EC 1.14.16.2) is involved in the conversion of phenylalanine to dopamine. As the rate-limiting enzyme in the synthesis of catecholamines, tyrosine hydroxylase has a key role in the physiology of adrenergic neurons.
Synonyms:	DYT5b; DYT14; TYH

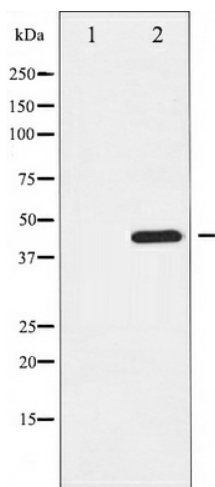


[View online »](#)

Protein Families: Druggable Genome

Protein Pathways: Metabolic pathways, Parkinson's disease, Tyrosine metabolism

Product images:



Western blot analysis of Tyrosine Hydroxylase phosphorylation expression in Insulin treated 293 whole cell lysates, The lane on the left is treated with the antigen-specific peptide.