

Product datasheet for **TA325932**

TGF beta 3 (TGFB3) Rabbit Polyclonal Antibody

Product data:

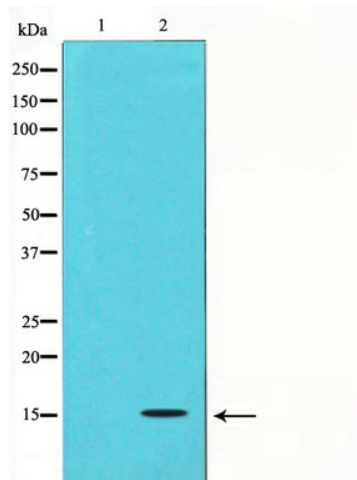
Product Type:	Primary Antibodies
Applications:	IHC, WB
Recommended Dilution:	WB: 1:500-1:2000; IHC: 1:50-1:200
Reactivity:	Human, Mouse, Rat
Host:	Rabbit
Isotype:	IgG
Clonality:	Polyclonal
Immunogen:	The antiserum was produced against a synthesized A synthesized peptide derived from human TGFB3.
Formulation:	Rabbit IgG in phosphate buffered saline , pH 7.4, 150mM NaCl, 0.02% sodium azide and 50% glycerol.
Concentration:	lot specific
Purification:	The antibody was affinity-purified from rabbit antiserum by affinity-chromatography using epitope-specific peptide.
Conjugation:	Unconjugated
Storage:	Store at -20°C as received.
Stability:	Stable for 12 months from date of receipt.
Gene Name:	transforming growth factor beta 3
Database Link:	NP_003230 Entrez Gene 21809 Mouse Entrez Gene 25717 Rat Entrez Gene 7043 Human P10600
Background:	TGFB3 Involved in embryogenesis and cell differentiation. Belongs to the TGF-beta family. Homodimer; disulfide-linked. Interacts with ASPN.
Synonyms:	ARVD; ARVD1; LDS5; RNHF; TGF-beta3
Protein Families:	Druggable Genome, Secreted Protein, Transmembrane



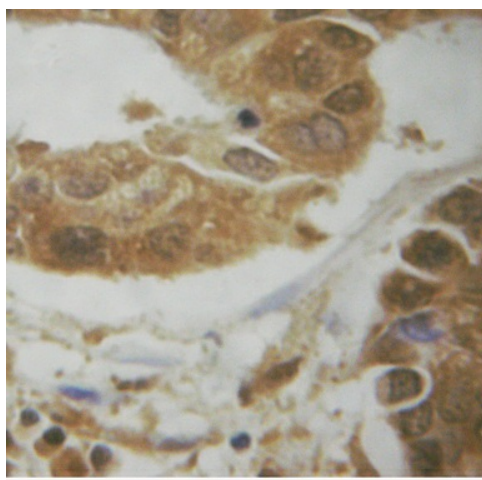
[View online »](#)

Protein Pathways:

Cell cycle, Chronic myeloid leukemia, Colorectal cancer, Cytokine-cytokine receptor interaction, Dilated cardiomyopathy, Hypertrophic cardiomyopathy (HCM), MAPK signaling pathway, Pancreatic cancer, Pathways in cancer, Renal cell carcinoma, TGF-beta signaling pathway

Product images:

Western blot analysis on COS7 cell lysate using TGFB3 Antibody



Immunohistochemical analysis of paraffin-embedded breast carcinoma tissue using TGFB3 Antibody.