

## Product datasheet for **TA325931**

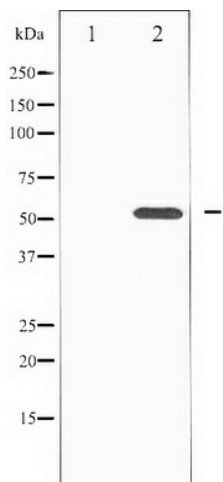
### TFEB Rabbit Polyclonal Antibody

#### Product data:

Product Type:	Primary Antibodies
Applications:	WB
Recommended Dilution:	WB: 1:500-1:2000; IHC: 1:50-1:200
Reactivity:	Human, Mouse
Host:	Rabbit
Isotype:	IgG
Clonality:	Polyclonal
Immunogen:	The antiserum was produced against A synthesized peptide derived from human TFEB
Formulation:	Rabbit IgG in phosphate buffered saline , pH 7.4, 150mM NaCl, 0.02% sodium azide and 50% glycerol.
Concentration:	lot specific
Purification:	The antibody was affinity-purified from rabbit antiserum by affinity-chromatography using epitope-specific peptide.
Conjugation:	Unconjugated
Storage:	Store at -20°C as received.
Stability:	Stable for 12 months from date of receipt.
Predicted Protein Size:	52 kDa
Gene Name:	transcription factor EB
Database Link:	<a href="#">NP_009093</a> <a href="#">Entrez Gene 21425 Mouse</a> <a href="#">Entrez Gene 7942 Human</a> <a href="#">P19484</a>
Background:	TFEB Probable transcription factor binds to the USF/MLTF site and probably recognizes E-box sequences in the heavy-chain immunoglobulin enhancer.
Synonyms:	ALPHATFEB; BHLHE35; TCFEB
Protein Families:	Druggable Genome, Transcription Factors



[View online »](#)

**Product images:**

Western blot analysis of TFEB expression in Mouse lungtissue lysates, The lane on the left is treated with the antigen-specific peptide.