

Product datasheet for **TA325922**

SYK Rabbit Polyclonal Antibody

Product data:

Product Type:	Primary Antibodies
Applications:	WB
Recommended Dilution:	WB: 1:500-1:2000; IHC: 1:50-1:200; IF/ICC: 1:100-1:500
Reactivity:	Human, Mouse, Rat
Modifications:	Phospho-specific
Host:	Rabbit
Isotype:	IgG
Clonality:	Polyclonal
Immunogen:	The antiserum was produced against A synthesized peptide derived from human SYK around the phosphorylation site of Tyrosine 323
Formulation:	Rabbit IgG in phosphate buffered saline , pH 7.4, 150mM NaCl, 0.02% sodium azide and 50% glycerol.
Concentration:	lot specific
Purification:	The antibody was affinity-purified from rabbit antiserum by affinity-chromatography using epitope-specific peptide.
Conjugation:	Unconjugated
Storage:	Store at -20°C as received.
Stability:	Stable for 12 months from date of receipt.
Predicted Protein Size:	80 kDa
Gene Name:	spleen tyrosine kinase
Database Link:	NP_001128524 Entrez Gene 20963 MouseEntrez Gene 25155 RatEntrez Gene 6850 Human P43405
Background:	Syk is a cytoplasmic tyrosine kinase of the SYK family containing two SH2 domains. Plays a central role in the B cell receptor (BCR) response. An upstream activator of the PI3K, PLCgamma2, and Rac/cdc42 pathways in the BCR response.
Synonyms:	p72-Syk

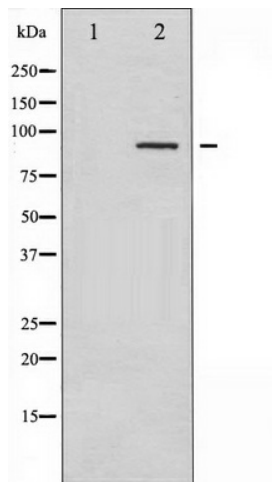


[View online »](#)

Protein Families: Druggable Genome, Protein Kinase

Protein Pathways: B cell receptor signaling pathway, Fc epsilon RI signaling pathway, Fc gamma R-mediated phagocytosis, Natural killer cell mediated cytotoxicity

Product images:



Western blot analysis of SYK phosphorylation expression in HT29 whole cell lysates, The lane on the left is treated with the antigen-specific peptide.