

## Product datasheet for **TA325919**

### SYK Rabbit Polyclonal Antibody

#### Product data:

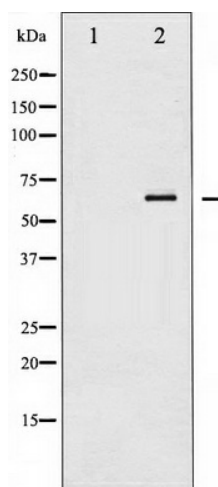
Product Type:	Primary Antibodies
Applications:	WB
Recommended Dilution:	WB: 1:500-1:2000; IHC: 1:50-1:200
Reactivity:	Human, Mouse, Rat
Host:	Rabbit
Isotype:	IgG
Clonality:	Polyclonal
Immunogen:	The antiserum was produced against A synthesized peptide derived from human SYK
Formulation:	Rabbit IgG in phosphate buffered saline , pH 7.4, 150mM NaCl, 0.02% sodium azide and 50% glycerol.
Concentration:	lot specific
Purification:	The antibody was affinity-purified from rabbit antiserum by affinity-chromatography using epitope-specific peptide.
Conjugation:	Unconjugated
Storage:	Store at -20°C as received.
Stability:	Stable for 12 months from date of receipt.
Predicted Protein Size:	72 kDa
Gene Name:	spleen tyrosine kinase
Database Link:	<a href="#">NP_003168</a> <a href="#">Entrez Gene 20963 Mouse</a> <a href="#">Entrez Gene 25155 Rat</a> <a href="#">Entrez Gene 6850 Human</a> <a href="#">P43405</a>
Background:	Syk is a cytoplasmic tyrosine kinase of the SYK family containing two SH2 domains. Plays a central role in the B cell receptor (BCR) response. An upstream activator of the PI3K, PLCgamma2, and Rac/cdc42 pathways in the BCR response.
Synonyms:	p72-Syk
Protein Families:	Druggable Genome, Protein Kinase



[View online »](#)

**Protein Pathways:** B cell receptor signaling pathway, Fc epsilon RI signaling pathway, Fc gamma R-mediated phagocytosis, Natural killer cell mediated cytotoxicity

**Product images:**



Western blot analysis of SYK expression in UV treated K562 whole cell lysates, The lane on the left is treated with the antigen-specific peptide.