

Product datasheet for **TA325918**

Syntaxin 1a (STX1A) Rabbit Polyclonal Antibody

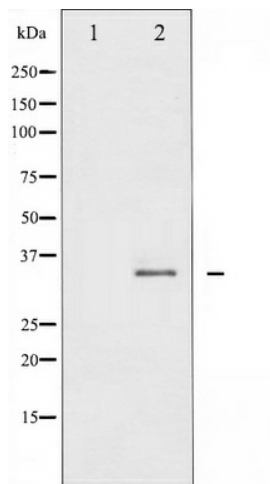
Product data:

Product Type:	Primary Antibodies
Applications:	WB
Recommended Dilution:	WB: 1:500-1:2000; IF/ICC: 1:100-1:500
Reactivity:	Human, Mouse, Rat
Modifications:	Phospho-specific
Host:	Rabbit
Isotype:	IgG
Clonality:	Polyclonal
Immunogen:	The antiserum was produced against A synthesized peptide derived from human Syntaxin 1A around the phosphorylation site of Serine 14
Formulation:	Rabbit IgG in phosphate buffered saline , pH 7.4, 150mM NaCl, 0.02% sodium azide and 50% glycerol.
Concentration:	lot specific
Purification:	The antibody was affinity-purified from rabbit antiserum by affinity-chromatography using epitope-specific peptide.
Conjugation:	Unconjugated
Storage:	Store at -20°C as received.
Stability:	Stable for 12 months from date of receipt.
Predicted Protein Size:	35 kDa
Gene Name:	syntaxin 1A
Database Link:	NP_001159375 Entrez Gene 20907 MouseEntrez Gene 116470 RatEntrez Gene 6804 Human Q16623
Background:	STX1A is a type IV membrane protein involved in docking of synaptic vesicles at presynaptic active zones. May play a critical role in neurotransmitter exocytosis. Part of the SNARE core complex containing SNAP25, VAMP2 and STX1A. Three splice variant isoforms have been described.



[View online »](#)

Synonyms: HPC-1; P35-1; STX1; SYN1A
Protein Families: Druggable Genome, Secreted Protein, Transmembrane
Protein Pathways: SNARE interactions in vesicular transport

Product images:

Western blot analysis of Syntaxin 1A phosphorylation expression in Mouse brain tissue lysates, The lane on the left is treated with the antigen-specific peptide.