

Product datasheet for **TA325917**

Syntaxin 1a (STX1A) Rabbit Polyclonal Antibody

Product data:

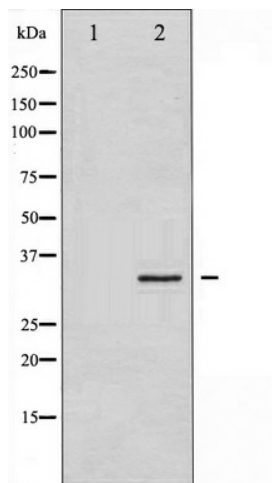
| | |
|-------------------------|--|
| Product Type: | Primary Antibodies |
| Applications: | WB |
| Recommended Dilution: | WB: 1:500-1:2000; IHC: 1:50-1:200; IF/ICC: 1:100-1:500 |
| Reactivity: | Human, Mouse, Rat |
| Host: | Rabbit |
| Isotype: | IgG |
| Clonality: | Polyclonal |
| Immunogen: | The antiserum was produced against A synthesized peptide derived from human Syntaxin 1A |
| Formulation: | Rabbit IgG in phosphate buffered saline , pH 7.4, 150mM NaCl, 0.02% sodium azide and 50% glycerol. |
| Concentration: | lot specific |
| Purification: | The antibody was affinity-purified from rabbit antiserum by affinity-chromatography using epitope-specific peptide. |
| Conjugation: | Unconjugated |
| Storage: | Store at -20°C as received. |
| Stability: | Stable for 12 months from date of receipt. |
| Predicted Protein Size: | 35 kDa |
| Gene Name: | syntaxin 1A |
| Database Link: | NP_004594 Entrez Gene 20907 Mouse Entrez Gene 116470 Rat Entrez Gene 6804 Human Q16623 |
| Background: | STX1A is a type IV membrane protein involved in docking of synaptic vesicles at presynaptic active zones. May play a critical role in neurotransmitter exocytosis. Part of the SNARE core complex containing SNAP25, VAMP2 and STX1A. Three splice variant isoforms have been described. |
| Synonyms: | HPC-1; P35-1; STX1; SYN1A |
| Protein Families: | Druggable Genome, Secreted Protein, Transmembrane |



[View online »](#)

Protein Pathways: SNARE interactions in vesicular transport

Product images:



Western blot analysis of Syntaxin 1A expression in HT29 whole cell lysates, The lane on the left is treated with the antigen-specific peptide.