

## Product datasheet for **TA325916**

### Stathmin 1 (STMN1) Rabbit Polyclonal Antibody

#### Product data:

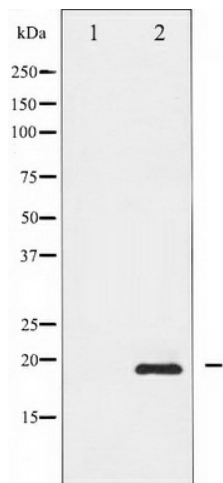
Product Type:	Primary Antibodies
Applications:	WB
Recommended Dilution:	WB: 1:500-1:2000; IHC: 1:50-1:200
Reactivity:	Human, Mouse, Rat
Modifications:	Phospho-specific
Host:	Rabbit
Isotype:	IgG
Clonality:	Polyclonal
Immunogen:	The antiserum was produced against A synthesized peptide derived from human Stathmin 1 around the phosphorylation site of Serine 37
Formulation:	Rabbit IgG in phosphate buffered saline , pH 7.4, 150mM NaCl, 0.02% sodium azide and 50% glycerol.
Concentration:	lot specific
Purification:	The antibody was affinity-purified from rabbit antiserum by affinity-chromatography using epitope-specific peptide.
Conjugation:	Unconjugated
Storage:	Store at -20°C as received.
Stability:	Stable for 12 months from date of receipt.
Predicted Protein Size:	19 kDa
Gene Name:	stathmin 1
Database Link:	<a href="#">NP_001138926</a> <a href="#">Entrez Gene 16765 MouseEntrez Gene 29332 RatEntrez Gene 3925 Human P16949</a>
Background:	This gene belongs to the stathmin family of genes. It encodes a ubiquitous cytosolic phosphoprotein proposed to function as an intracellular relay integrating regulatory signals of the cellular environment.
Synonyms:	C1orf215; Lag; LAP18; OP18; PP17; PP19; PR22; SMN



[View online »](#)

Protein Pathways: MAPK signaling pathway

**Product images:**



Western blot analysis of Stathmin 1 phosphorylation expression in PMA treated Jurkat whole cell lysates, The lane on the left is treated with the antigen-specific peptide.