

Product datasheet for **TA325911**

LKB1 (STK11) Rabbit Polyclonal Antibody

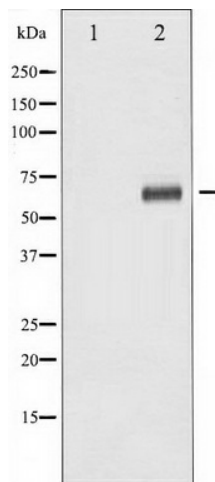
Product data:

Product Type:	Primary Antibodies
Applications:	WB
Recommended Dilution:	WB: 1:500-1:2000; IHC: 1:50-1:200; IF/ICC: 1:100-1:500
Reactivity:	Human, Mouse
Modifications:	Phospho-specific
Host:	Rabbit
Isotype:	IgG
Clonality:	Polyclonal
Immunogen:	The antiserum was produced against A synthesized peptide derived from human LKB1 around the phosphorylation site of Serine 428
Formulation:	Rabbit IgG in phosphate buffered saline , pH 7.4, 150mM NaCl, 0.02% sodium azide and 50% glycerol.
Concentration:	lot specific
Purification:	The antibody was affinity-purified from rabbit antiserum by affinity-chromatography using epitope-specific peptide.
Conjugation:	Unconjugated
Storage:	Store at -20°C as received.
Stability:	Stable for 12 months from date of receipt.
Predicted Protein Size:	65 kDa
Gene Name:	serine/threonine kinase 11
Database Link:	NP_000446 Entrez Gene 20869 Mouse Entrez Gene 6794 Human Q15831
Background:	ubiquitously expressed kinase of the CAMKL family with a tumor suppressor activity. Phosphorylates AGS3 (activator of G-protein signaling 3) GPR domains, regulating the interaction of GPR-containing proteins with G-proteins. Strongest expression in testis and fetal liver. Mutations in LKB1 lead to the Peutz-Jeghers cancer syndrome.



[View online »](#)

Synonyms: hLKB1; LKB1; PJS
Protein Families: Druggable Genome, Protein Kinase
Protein Pathways: Adipocytokine signaling pathway, mTOR signaling pathway

Product images:

Western blot analysis of LKB1 phosphorylation expression in PMA treated HeLa whole cell lysates, The lane on the left is treated with the antigen-specific peptide.