

## Product datasheet for **TA325909**

### STAT6 Rabbit Polyclonal Antibody

#### Product data:

Product Type:	Primary Antibodies
Applications:	WB
Recommended Dilution:	WB: 1:500-1:2000; IHC: 1:50-1:200
Reactivity:	Human, Mouse, Rat
Modifications:	Phospho-specific
Host:	Rabbit
Isotype:	IgG
Clonality:	Polyclonal
Immunogen:	The antiserum was produced against A synthesized peptide derived from human STAT6 around the phosphorylation site of Tyrosine 641
Formulation:	Rabbit IgG in phosphate buffered saline , pH 7.4, 150mM NaCl, 0.02% sodium azide and 50% glycerol.
Concentration:	lot specific
Purification:	The antibody was affinity-purified from rabbit antiserum by affinity-chromatography using epitope-specific peptide.
Conjugation:	Unconjugated
Storage:	Store at -20°C as received.
Stability:	Stable for 12 months from date of receipt.
Predicted Protein Size:	94 kDa
Gene Name:	signal transducer and activator of transcription 6
Database Link:	<a href="#">NP_001171549</a> <a href="#">Entrez Gene 20852 MouseEntrez Gene 362896 RatEntrez Gene 6778 Human P42226</a>
Background:	STAT6 transcription factor of the STAT family. Plays a central role in IL4-mediated biological responses. Induces the expression of BCL2L1/BCL-X(L), which is responsible for the anti-apoptotic activity of IL4.
Synonyms:	D12S1644; IL-4-STAT; STAT6B; STAT6C

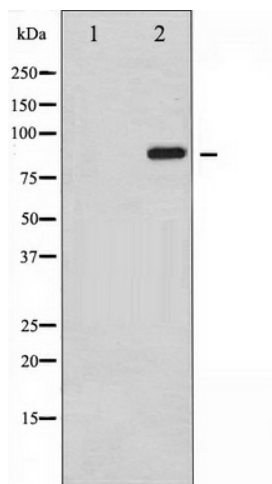


[View online »](#)

**Protein Families:** Druggable Genome, ES Cell Differentiation/IPS, Stem cell relevant signaling - DSL/Notch pathway, Stem cell relevant signaling - JAK/STAT signaling pathway, Transcription Factors

**Protein Pathways:** Jak-STAT signaling pathway

**Product images:**



Western blot analysis of STAT6 phosphorylation expression in IL-4 treated HeLa whole cell lysates, The lane on the left is treated with the antigen-specific peptide.