

## Product datasheet for **TA325890**

### STAT2 Rabbit Polyclonal Antibody

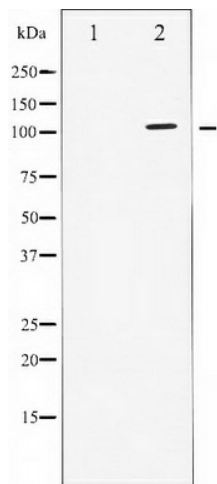
#### Product data:

Product Type:	Primary Antibodies
Applications:	WB
Recommended Dilution:	WB: 1:500-1:2000; IHC: 1:50-1:200
Reactivity:	Human, Rat
Modifications:	Phospho-specific
Host:	Rabbit
Isotype:	IgG
Clonality:	Polyclonal
Immunogen:	The antiserum was produced against A synthesized peptide derived from human STAT2 around the phosphorylation site of Tyrosine 690
Formulation:	Rabbit IgG in phosphate buffered saline , pH 7.4, 150mM NaCl, 0.02% sodium azide and 50% glycerol.
Concentration:	lot specific
Purification:	The antibody was affinity-purified from rabbit antiserum by affinity-chromatography using epitope-specific peptide.
Conjugation:	Unconjugated
Storage:	Store at -20°C as received.
Stability:	Stable for 12 months from date of receipt.
Predicted Protein Size:	113 kDa
Gene Name:	signal transducer and activator of transcription 2
Database Link:	<a href="#">NP_005410</a> <a href="#">Entrez Gene 288774 Rat</a> <a href="#">Entrez Gene 6773 Human</a> <a href="#">P52630</a>
Background:	The protein encoded by this gene is a member of the STAT protein family. In response to cytokines and growth factors, STAT family members are phosphorylated by the receptor associated kinases, and then form homo- or heterodimers that translocate to the cell nucleus where they act as transcription activators.



[View online »](#)

**Synonyms:** IMD44; ISGF-3; P113; STAT113  
**Protein Families:** Druggable Genome, Transcription Factors  
**Protein Pathways:** Chemokine signaling pathway, Jak-STAT signaling pathway

**Product images:**

Western blot analysis of STAT2 phosphorylation expression in IFN treated HeLa whole cell lysates, The lane on the left is treated with the antigen-specific peptide.