

Product datasheet for **TA325889**

STAT2 Rabbit Polyclonal Antibody

Product data:

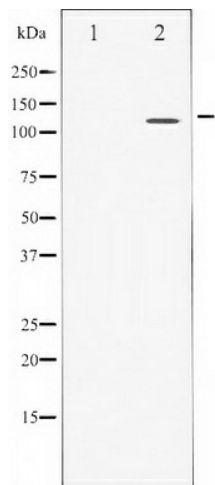
Product Type:	Primary Antibodies
Applications:	WB
Recommended Dilution:	WB: 1:500-1:2000; IHC: 1:50-1:200
Reactivity:	Human, Rat
Host:	Rabbit
Isotype:	IgG
Clonality:	Polyclonal
Immunogen:	The antiserum was produced against A synthesized peptide derived from human STAT2
Formulation:	Rabbit IgG in phosphate buffered saline , pH 7.4, 150mM NaCl, 0.02% sodium azide and 50% glycerol.
Concentration:	lot specific
Purification:	The antibody was affinity-purified from rabbit antiserum by affinity-chromatography using epitope-specific peptide.
Conjugation:	Unconjugated
Storage:	Store at -20°C as received.
Stability:	Stable for 12 months from date of receipt.
Predicted Protein Size:	113 kDa
Gene Name:	signal transducer and activator of transcription 2
Database Link:	NP_005410 Entrez Gene 288774 Rat Entrez Gene 6773 Human P52630
Background:	The protein encoded by this gene is a member of the STAT protein family. In response to cytokines and growth factors, STAT family members are phosphorylated by the receptor associated kinases, and then form homo- or heterodimers that translocate to the cell nucleus where they act as transcription activators.
Synonyms:	IMD44; ISGF-3; P113; STAT113
Protein Families:	Druggable Genome, Transcription Factors



[View online »](#)

Protein Pathways: Chemokine signaling pathway, Jak-STAT signaling pathway

Product images:



Western blot analysis of STAT2 expression in IFN treated HeLa whole cell lysates, The lane on the left is treated with the antigen-specific peptide.