

Product datasheet for **TA325884**

Serum Response Factor (SRF) Rabbit Polyclonal Antibody

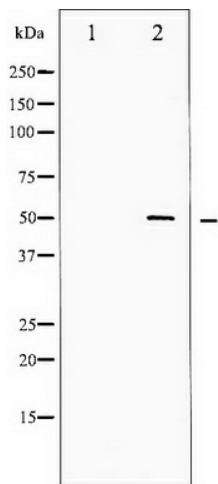
Product data:

Product Type:	Primary Antibodies
Applications:	WB
Recommended Dilution:	WB: 1:500-1:2000; IHC: 1:50-1:200
Reactivity:	Human, Mouse, Rat
Modifications:	Phospho-specific
Host:	Rabbit
Isotype:	IgG
Clonality:	Polyclonal
Immunogen:	The antiserum was produced against A synthesized peptide derived from human SRF around the phosphorylation site of Serine 99
Formulation:	Rabbit IgG in phosphate buffered saline , pH 7.4, 150mM NaCl, 0.02% sodium azide and 50% glycerol.
Concentration:	lot specific
Purification:	The antibody was affinity-purified from rabbit antiserum by affinity-chromatography using epitope-specific peptide.
Conjugation:	Unconjugated
Storage:	Store at -20°C as received.
Stability:	Stable for 12 months from date of receipt.
Predicted Protein Size:	51 kDa
Gene Name:	serum response factor
Database Link:	NP_003122 Entrez Gene 20807 MouseEntrez Gene 501099 RatEntrez Gene 6722 Human P11831
Background:	This gene encodes a ubiquitous nuclear protein that stimulates both cell proliferation and differentiation. It is a member of the MADS (MCM1, Agamous, Deficiens, and SRF) box superfamily of transcription factors. This protein binds to the serum response element (SRE) in the promoter region of target genes.



[View online »](#)

Synonyms: MCM1
Protein Families: Druggable Genome, Transcription Factors
Protein Pathways: MAPK signaling pathway

Product images:

Western blot analysis of SRF phosphorylation expression in Serum treated LOVO whole cell lysates, The lane on the left is treated with the antigen-specific peptide.