

Product datasheet for **TA325882**

SREBP1 (SREBF1) Rabbit Polyclonal Antibody

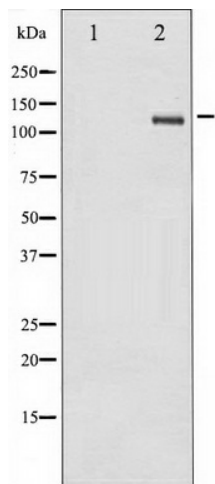
Product data:

Product Type:	Primary Antibodies
Applications:	WB
Recommended Dilution:	WB: 1:500-1:2000; IHC: 1:50-1:200
Reactivity:	Human, Rat
Modifications:	Phospho-specific
Host:	Rabbit
Isotype:	IgG
Clonality:	Polyclonal
Immunogen:	The antiserum was produced against A synthesized peptide derived from human SREBP-1 around the phosphorylation site of Serine 439
Formulation:	Rabbit IgG in phosphate buffered saline , pH 7.4, 150mM NaCl, 0.02% sodium azide and 50% glycerol.
Concentration:	lot specific
Purification:	The antibody was affinity-purified from rabbit antiserum by affinity-chromatography using epitope-specific peptide.
Conjugation:	Unconjugated
Storage:	Store at -20°C as received.
Stability:	Stable for 12 months from date of receipt.
Predicted Protein Size:	122 kDa
Gene Name:	sterol regulatory element binding transcription factor 1
Database Link:	NP_001005291 Entrez Gene 78968 Rat Entrez Gene 6720 Human P36956
Background:	This gene encodes a transcription factor that binds to the sterol regulatory element-1 (SRE1), which is a decamer flanking the low density lipoprotein receptor gene and some genes involved in sterol biosynthesis. The protein is synthesized as a precursor that is attached to the nuclear membrane and endoplasmic reticulum.



[View online »](#)

Synonyms: bHLHd1; SREBP-1c; SREBP1; SREBP1a
Protein Families: Druggable Genome, Transcription Factors
Protein Pathways: Insulin signaling pathway

Product images:

Western blot analysis of SREBP-1 phosphorylation expression in TNF treated Jurkat whole cell lysates, The lane on the left is treated with the antigen-specific peptide.