

## Product datasheet for **TA325881S**

### **SREBP1 (SREBF1) Rabbit Polyclonal Antibody**

#### **Product data:**

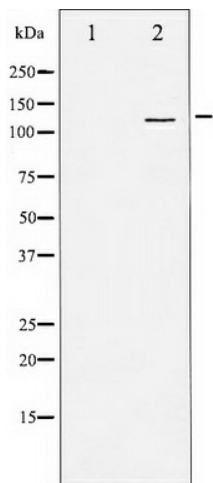
<b>Product Type:</b>	Primary Antibodies
<b>Applications:</b>	WB
<b>Recommended Dilution:</b>	WB: 1:500-1:2000; IHC: 1:50-1:200
<b>Reactivity:</b>	Human, Rat
<b>Host:</b>	Rabbit
<b>Isotype:</b>	IgG
<b>Clonality:</b>	Polyclonal
<b>Immunogen:</b>	The antiserum was produced against A synthesized peptide derived from human SREBP-1
<b>Formulation:</b>	Rabbit IgG in phosphate buffered saline , pH 7.4, 150mM NaCl, 0.02% sodium azide and 50% glycerol.
<b>Concentration:</b>	lot specific
<b>Purification:</b>	The antibody was affinity-purified from rabbit antiserum by affinity-chromatography using epitope-specific peptide.
<b>Conjugation:</b>	Unconjugated
<b>Storage:</b>	Store at -20°C as received.
<b>Stability:</b>	Stable for 12 months from date of receipt.
<b>Predicted Protein Size:</b>	122 kDa
<b>Gene Name:</b>	sterol regulatory element binding transcription factor 1
<b>Database Link:</b>	<a href="#">NP_001005291</a> <a href="#">Entrez Gene 78968 Rat</a> <a href="#">Entrez Gene 6720 Human</a> <a href="#">P36956</a>
<b>Background:</b>	This gene encodes a transcription factor that binds to the sterol regulatory element-1 (SRE1), which is a decamer flanking the low density lipoprotein receptor gene and some genes involved in sterol biosynthesis. The protein is synthesized as a precursor that is attached to the nuclear membrane and endoplasmic reticulum.
<b>Synonyms:</b>	bHLHd1; SREBP-1c; SREBP1; SREBP1a
<b>Protein Families:</b>	Druggable Genome, Transcription Factors



[View online »](#)

Protein Pathways: Insulin signaling pathway

**Product images:**



Western blot analysis of SREBP-1 expression in TNF treated JK whole cell lysates, The lane on the left is treated with the antigen-specific peptide.