

Product datasheet for **TA325868**

gamma Synuclein (SNCG) Rabbit Polyclonal Antibody

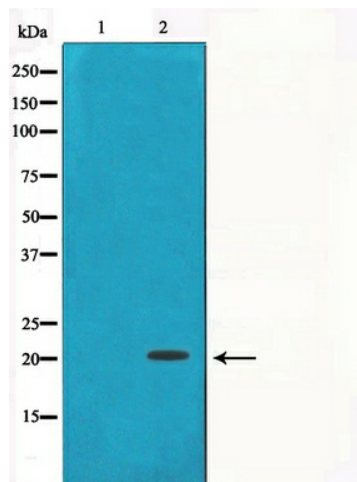
Product data:

Product Type:	Primary Antibodies
Applications:	WB
Recommended Dilution:	WB: 1:500-1:2000
Reactivity:	Human
Host:	Rabbit
Isotype:	IgG
Clonality:	Polyclonal
Immunogen:	The antiserum was produced against a synthesized A synthesized peptide derived from human Gamma-synuclein.
Formulation:	Rabbit IgG in phosphate buffered saline , pH 7.4, 150mM NaCl, 0.02% sodium azide and 50% glycerol.
Concentration:	lot specific
Purification:	The antibody was affinity-purified from rabbit antiserum by affinity-chromatography using epitope-specific peptide.
Conjugation:	Unconjugated
Storage:	Store at -20°C as received.
Stability:	Stable for 12 months from date of receipt.
Gene Name:	synuclein gamma
Database Link:	NP_003078 Entrez Gene 6623 Human O76070
Background:	SNCG a member of the synuclein family of proteins which are believed to be involved in the pathogenesis of neurodegenerative diseases. May be involved in modulating axonal architecture during development and in the adult. Plays a role in neurofilament network integrity. High levels have been identified in advanced breast carcinomas.
Synonyms:	BCSG1; SR



[View online »](#)

Product images:



Western blot analysis on HT29 cell lysate using
Gamma-synuclein Antibody