

Product datasheet for **TA325866**

alpha Synuclein (SNCA) Rabbit Polyclonal Antibody

Product data:

| | |
|-------------------------|--------------------------------------------------------------------------------------------------------------------------------------------------------------------------------------------------------------------------|
| Product Type: | Primary Antibodies |
| Applications: | WB |
| Recommended Dilution: | WB: 1:500-1:2000 |
| Reactivity: | Human, Mouse, Rat |
| Modifications: | Phospho-specific |
| Host: | Rabbit |
| Isotype: | IgG |
| Clonality: | Polyclonal |
| Immunogen: | The antiserum was produced against A synthesized peptide derived from human Synuclein-alpha around the phosphorylation site of Tyrosine 133 |
| Formulation: | Rabbit IgG in phosphate buffered saline , pH 7.4, 150mM NaCl, 0.02% sodium azide and 50% glycerol. |
| Concentration: | lot specific |
| Purification: | The antibody was affinity-purified from rabbit antiserum by affinity-chromatography using epitope-specific peptide. |
| Conjugation: | Unconjugated |
| Storage: | Store at -20°C as received. |
| Stability: | Stable for 12 months from date of receipt. |
| Predicted Protein Size: | 18 kDa |
| Gene Name: | synuclein alpha |
| Database Link: | NP_000336 Entrez Gene 20617 MouseEntrez Gene 29219 RatEntrez Gene 6622 Human P37840 |
| Background: | Alpha-synuclein is a member of the synuclein family, which also includes beta- and gamma-synuclein. Synucleins are abundantly expressed in the brain and alpha- and beta-synuclein inhibit phospholipase D2 selectively. |
| Synonyms: | NACP; PARK1; PARK4; PD1 |

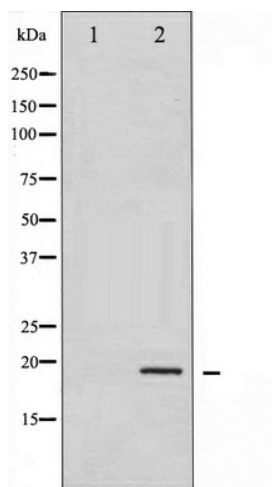


[View online »](#)

Protein Families: Druggable Genome

Protein Pathways: Alzheimer's disease, Parkinson's disease

Product images:



Western blot analysis of Synuclein- alpha phosphorylation expression in Etoposide treated 293 whole cell lysates, The lane on the left is treated with the antigen-specific peptide.