

## Product datasheet for **TA325865**

### alpha Synuclein (SNCA) Rabbit Polyclonal Antibody

#### Product data:

Product Type:	Primary Antibodies
Applications:	WB
Recommended Dilution:	WB: 1:500-1:2000; IHC: 1:50-1:200
Reactivity:	Human, Mouse, Rat
Modifications:	Phospho-specific
Host:	Rabbit
Isotype:	IgG
Clonality:	Polyclonal
Immunogen:	The antiserum was produced against A synthesized peptide derived from human Synuclein around the phosphorylation site of Serine 129
Formulation:	Rabbit IgG in phosphate buffered saline , pH 7.4, 150mM NaCl, 0.02% sodium azide and 50% glycerol.
Concentration:	lot specific
Purification:	The antibody was affinity-purified from rabbit antiserum by affinity-chromatography using epitope-specific peptide.
Conjugation:	Unconjugated
Storage:	Store at -20°C as received.
Stability:	Stable for 12 months from date of receipt.
Predicted Protein Size:	18 kDa
Gene Name:	synuclein alpha
Database Link:	<a href="#">NP_000336</a> <a href="#">Entrez Gene 20617 MouseEntrez Gene 29219 RatEntrez Gene 6622 Human P37840</a>
Background:	Alpha-synuclein is a member of the synuclein family, which also includes beta- and gamma-synuclein. Synucleins are abundantly expressed in the brain and alpha- and beta-synuclein inhibit phospholipase D2 selectively.
Synonyms:	NACP; PARK1; PARK4; PD1

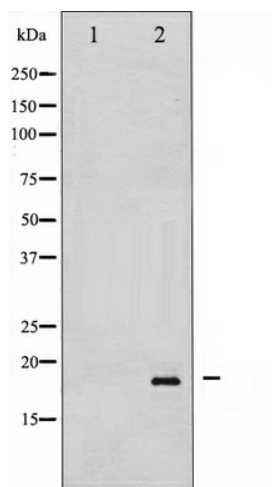


[View online »](#)

Protein Families: Druggable Genome

Protein Pathways: Alzheimer's disease, Parkinson's disease

### Product images:



Western blot analysis of Synuclein phosphorylation expression in Mouse brain tissue lysates, The lane on the left is treated with the antigen-specific peptide.