

Product datasheet for **TA325864**

alpha Synuclein (SNCA) Rabbit Polyclonal Antibody

Product data:

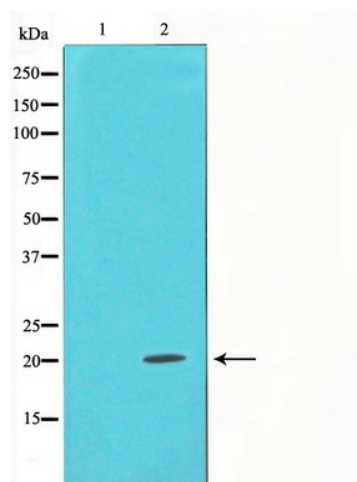
Product Type:	Primary Antibodies
Applications:	WB
Recommended Dilution:	WB: 1:500-1:2000
Reactivity:	Human, Mouse, Rat
Host:	Rabbit
Isotype:	IgG
Clonality:	Polyclonal
Immunogen:	The antiserum was produced against a synthesized A synthesized peptide derived from human Alpha-synuclein.
Formulation:	Rabbit IgG in phosphate buffered saline , pH 7.4, 150mM NaCl, 0.02% sodium azide and 50% glycerol.
Concentration:	lot specific
Purification:	The antibody was affinity-purified from rabbit antiserum by affinity-chromatography using epitope-specific peptide.
Conjugation:	Unconjugated
Storage:	Store at -20°C as received.
Stability:	Stable for 12 months from date of receipt.
Gene Name:	synuclein alpha
Database Link:	NP_000336 Entrez Gene 20617 MouseEntrez Gene 29219 RatEntrez Gene 6622 Human P37840
Background:	SNCA a member of the synuclein family. Abundantly expressed in the brain. Inhibits phospholipase D2 selectively. May integrate presynaptic signaling and membrane trafficking. Implicated in the pathogenesis of Parkinson's disease. A major component of amyloid plaques in the brains of patients with Alzheimer's disease. Two alternatively spliced isoforms transcripts have been identified.
Synonyms:	NACP; PARK1; PARK4; PD1
Protein Families:	Druggable Genome



[View online »](#)

Protein Pathways: Alzheimer's disease, Parkinson's disease

Product images:



Western blot analysis on mouse brain cell lysate using Alpha-synuclein Antibody