

## Product datasheet for **TA325858**

### SMC1 (SMC1A) Rabbit Polyclonal Antibody

#### Product data:

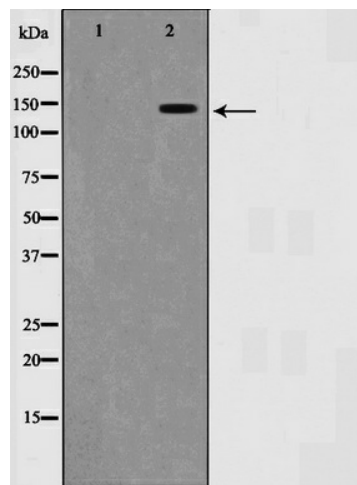
Product Type:	Primary Antibodies
Applications:	WB
Recommended Dilution:	WB: 1:500-1:2000; IHC: 1:50-1:200
Reactivity:	Human, Mouse
Host:	Rabbit
Isotype:	IgG
Clonality:	Polyclonal
Immunogen:	The antiserum was produced against A synthesized peptide derived from human SMC1
Formulation:	Rabbit IgG in phosphate buffered saline , pH 7.4, 150mM NaCl, 0.02% sodium azide and 50% glycerol.
Concentration:	lot specific
Purification:	The antibody was affinity-purified from rabbit antiserum by affinity-chromatography using epitope-specific peptide.
Conjugation:	Unconjugated
Storage:	Store at -20°C as received.
Stability:	Stable for 12 months from date of receipt.
Predicted Protein Size:	145 kDa
Gene Name:	structural maintenance of chromosomes 1A
Database Link:	<a href="#">NP_006297</a> <a href="#">Entrez Gene 24061 Mouse</a> <a href="#">Entrez Gene 8243 Human</a> <a href="#">Q14683</a>
Background:	Smc1 ia a component of the cohesin multiprotein complex that is required for sister chromatid cohesion. Most of the cohesin complexes dissociate from the chromosomes before mitosis, although those complexes at the kinetochore remain. Thought to be an important part of functional kinetochores.
Synonyms:	CDLS2; DXS423E; SB1.8; SMC1; SMC1alpha; SMC1L1; SMCB
Protein Families:	Druggable Genome



[View online »](#)

Protein Pathways: Cell cycle, Oocyte meiosis

### Product images:



Western blot analysis of SMC1 expression in UV treated 293 whole cell lysates, The lane on the left is treated with the antigen-specific peptide.