

## Product datasheet for **TA325846**

### SMAD1 Rabbit Polyclonal Antibody

#### Product data:

Product Type:	Primary Antibodies
Applications:	WB
Recommended Dilution:	WB: 1:500-1:2000; IHC: 1:50-1:200
Reactivity:	Mouse
Modifications:	Phospho-specific
Host:	Rabbit
Isotype:	IgG
Clonality:	Polyclonal
Immunogen:	The antiserum was produced against A synthesized peptide derived from human Smad1 around the phosphorylation site of Serine 187
Formulation:	Rabbit IgG in phosphate buffered saline , pH 7.4, 150mM NaCl, 0.02% sodium azide and 50% glycerol.
Concentration:	lot specific
Purification:	The antibody was affinity-purified from rabbit antiserum by affinity-chromatography using epitope-specific peptide.
Conjugation:	Unconjugated
Storage:	Store at -20°C as received.
Stability:	Stable for 12 months from date of receipt.
Predicted Protein Size:	55 kDa
Gene Name:	SMAD family member 1
Database Link:	<a href="#">NP_001003688</a> <a href="#">Entrez Gene 17125 Mouse</a> <a href="#">Q15797</a>
Background:	The protein encoded by this gene belongs to the SMAD, a family of proteins similar to the gene products of the Drosophila gene 'mothers against decapentaplegic' (Mad) and the C. elegans gene Sma. SMAD proteins are signal transducers and transcriptional modulators that mediate multiple signaling pathways.



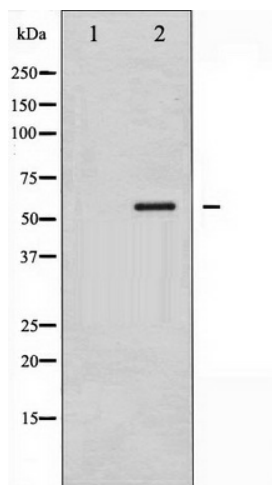
[View online »](#)

**Synonyms:** BSP-1; BSP1; JV4-1; JV41; MADH1; MADR1

**Protein Families:** Cancer stem cells, Druggable Genome, ES Cell Differentiation/IPS, Stem cell relevant signaling - JAK/STAT signaling pathway, Stem cell relevant signaling - TGFb/BMP signaling pathway, Transcription Factors

**Protein Pathways:** TGF-beta signaling pathway

**Product images:**



Western blot analysis of Smad1 phosphorylation expression in Mouse muscle tissue lysates, The lane on the left is treated with the antigen-specific peptide.